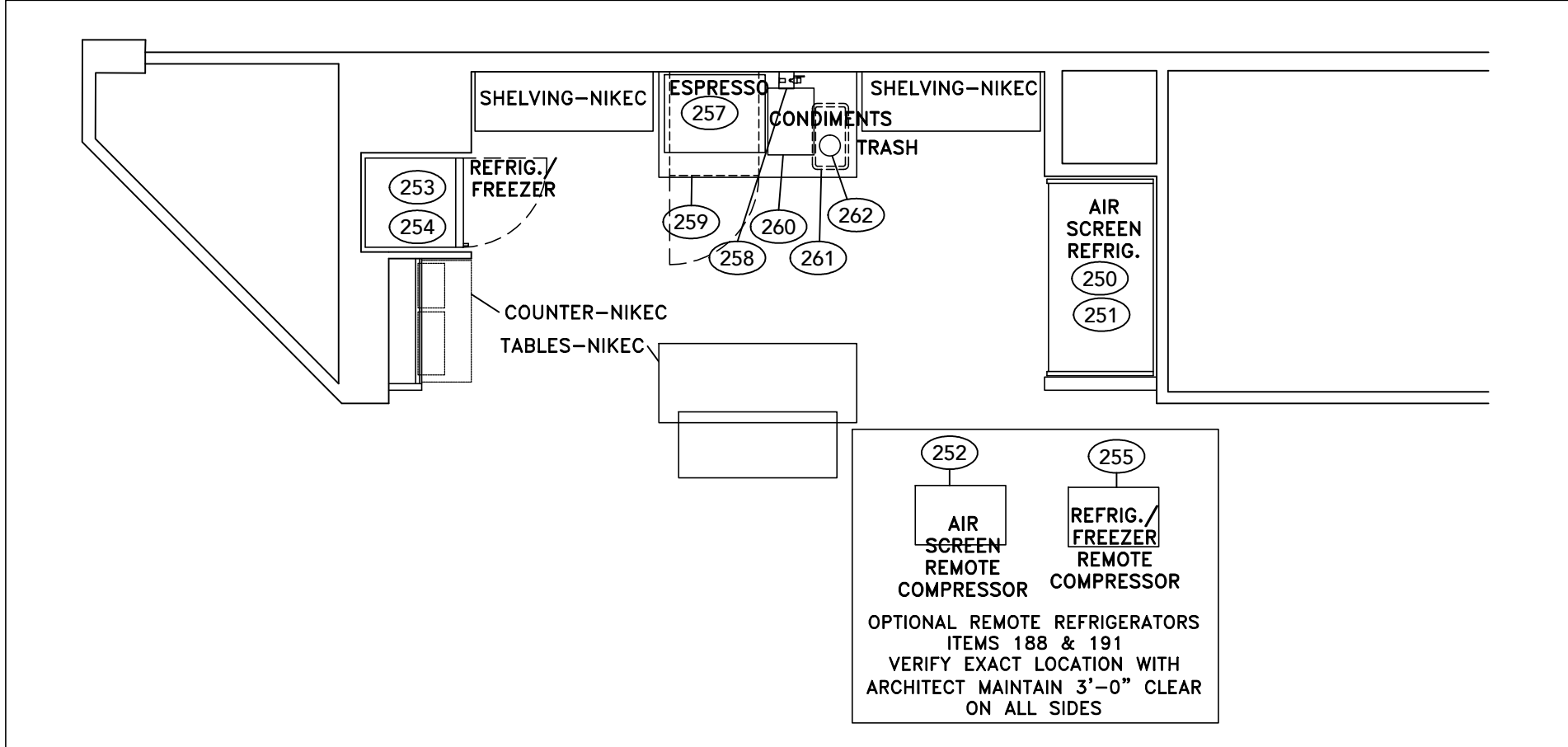


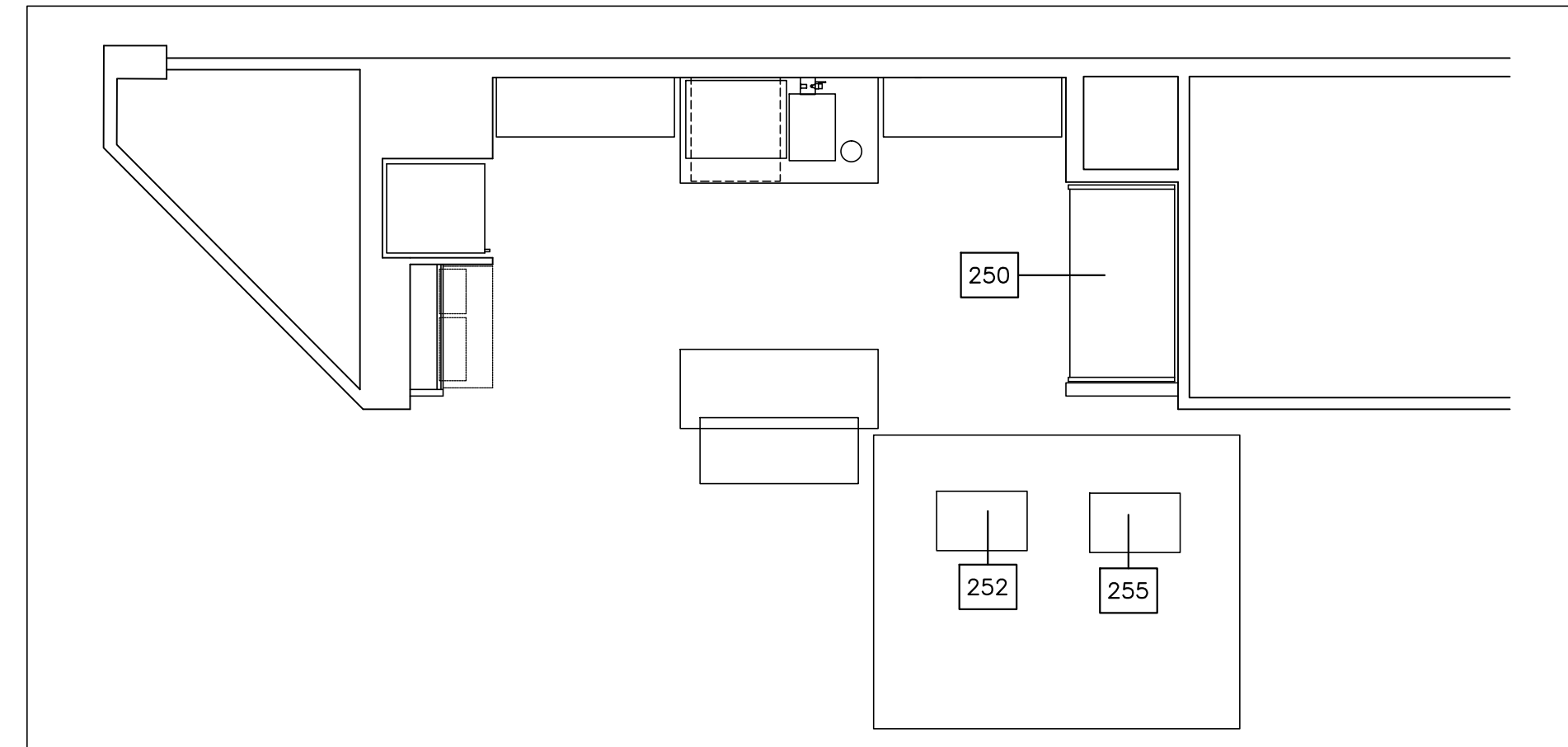
E'TERIE FOOD TO GO ITEMS 250-262

EQUIPMENT SCHEDULE table with columns: ITEM NO, QTY, DESCRIPTION, MANUFACTURER, MODEL NUMBER

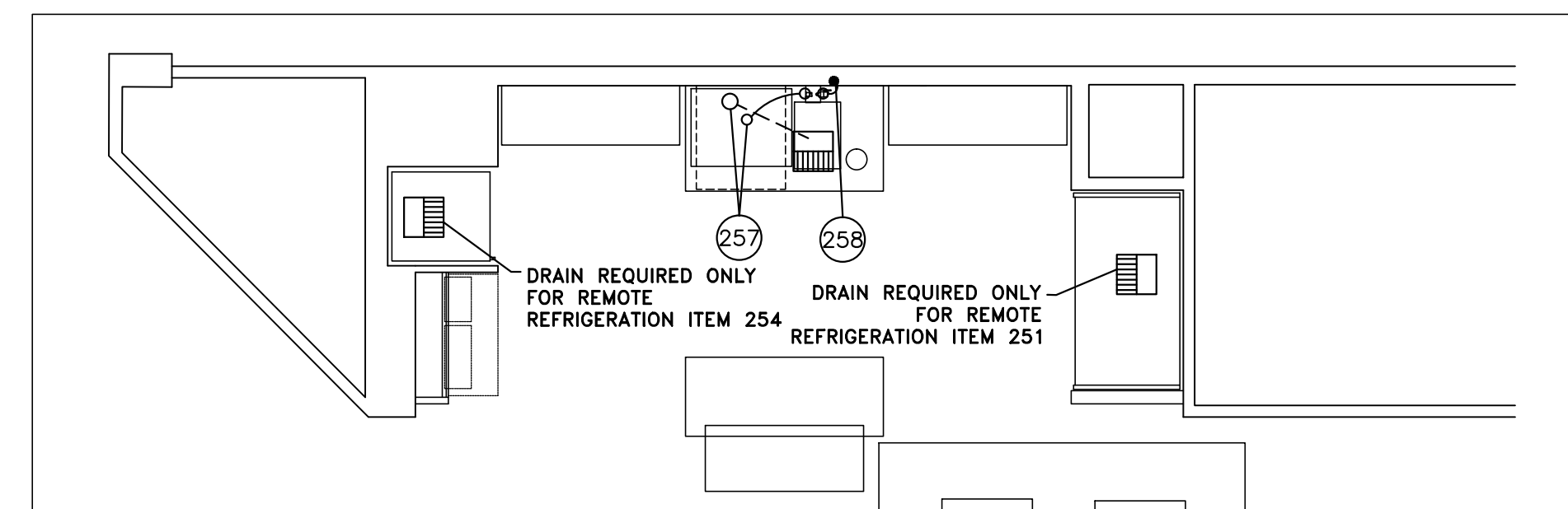
EQUIPMENT SCHEDULE table with columns: ITEM NO, QTY, DESCRIPTION, VOLTS, PHASE, HP, KW, DIRECT DRIVE, DUCT FLEX, ELECTRICAL, ELEC. REMARKS, COLD WATER SIZE, HOT WATER SIZE, etc.



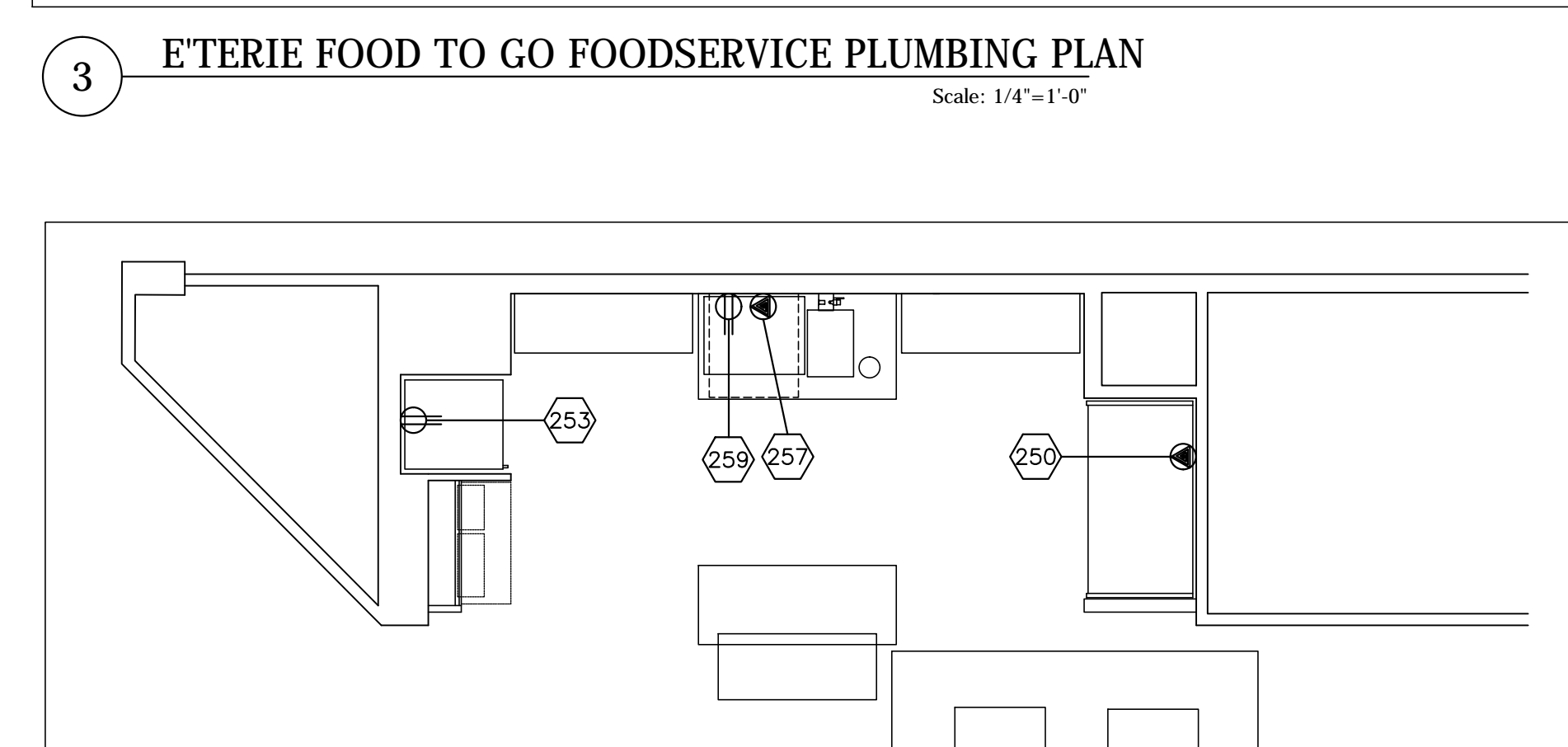
E'TERIE FOOD TO GO FOODSERVICE EQUIPMENT PLAN



E'TERIE FOOD TO GO FOODSERVICE SPECIAL PLAN



E'TERIE FOOD TO GO FOODSERVICE PLUMBING PLAN



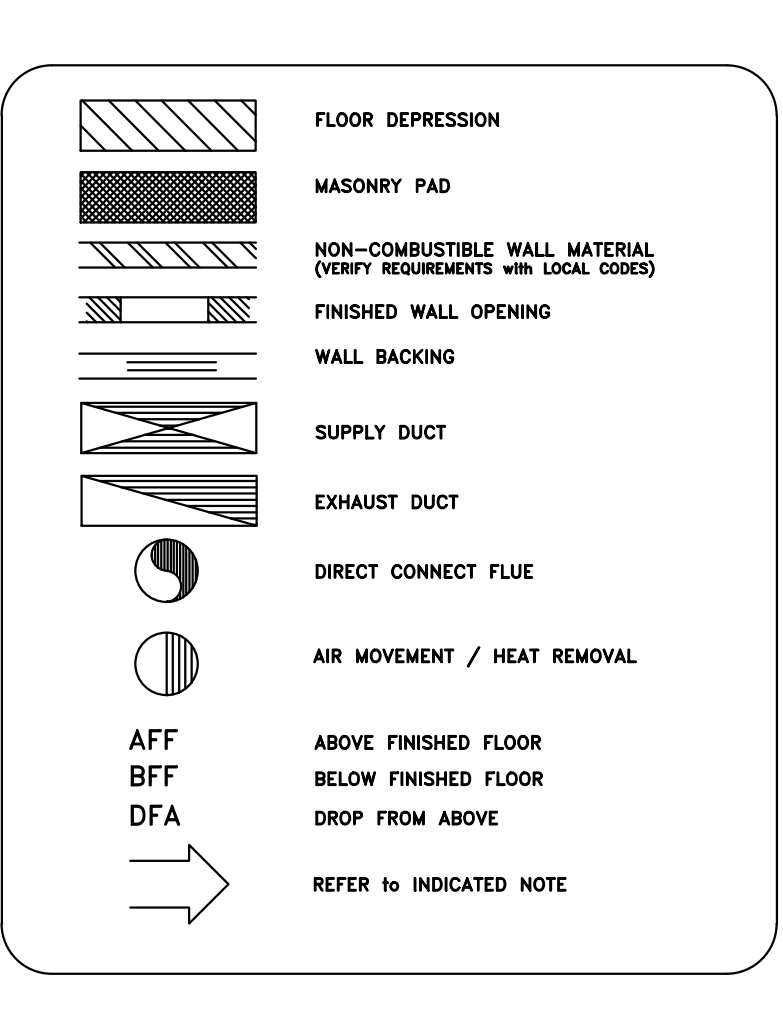
E'TERIE FOOD TO GO FOODSERVICE ELECTRICAL PLAN

BUILDING CONDITIONS / VENTILATION NOTES
PLEASE DISREGARD NOTES THAT DO NOT APPLY TO THIS PROJECT
A. GENERAL NOTES
1. ALL WORK INDICATED ON THIS BUILDING CONDITIONS...

MECHANICAL CONTRACTOR REQUIREMENTS
1. THE INSULATION FOR ALL COOKING EQUIPMENT EXHAUST HOODS AND DUCTS AS REQUIRED BY LOCAL CODES.
2. THE HORIZONTAL DUCT WORK FOR ALL Ovens / UTENSIL WASHERS...

GENERAL CONTRACTOR REQUIREMENTS
1. THE IN-WALK REWORKING OR WALL BACKING FOR ALL WALK-IN REFRIGERATORS...

GENERAL CONTRACTOR REQUIREMENTS
10. ALL OPENINGS IN WALLS AS INDICATED ON THIS PLAN FOR ANY RECESSED OR SEMI-RECESSED EQUIPMENT...

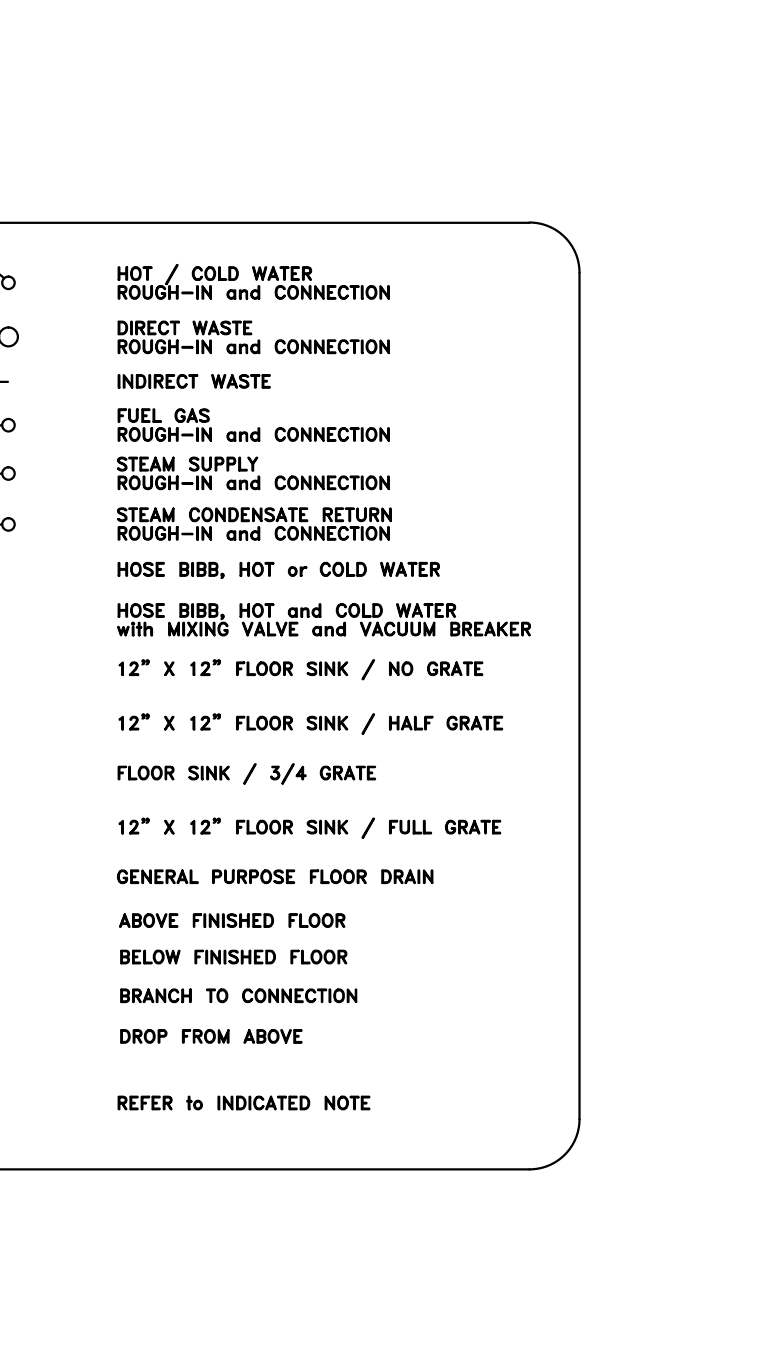


RELATED PLUMBING REQUIREMENTS
PLEASE DISREGARD NOTES THAT DO NOT APPLY TO THIS PROJECT
A. GENERAL NOTES
1. ALL WORK INDICATED ON THIS PLUMBING ROUGH-IN PLAN MUST BE COMPLETED BY OTHER THAN THE KITCHEN EQUIPMENT CONTRACTOR...

RELATED PLUMBING REQUIREMENTS
PLEASE DISREGARD NOTES THAT DO NOT APPLY TO THIS PROJECT
B. PLUMBING CONTRACTOR NOTES - CONTINUED:
1. COMPLETE HAND SINK ASSEMBLIES. VERIFY COMPLIANCE WITH LOCAL CODES AND REGULATIONS...

RELATED PLUMBING REQUIREMENTS
PLEASE DISREGARD NOTES THAT DO NOT APPLY TO THIS PROJECT
B. PLUMBING CONTRACTOR NOTES - CONTINUED:
10. NOTES CONCERNING PLUMBING CONNECTIONS:
a. WATER TO STEAM PRODUCTION EQUIPMENT MUST HAVE A WATER STOP VALVE...

RELATED PLUMBING REQUIREMENTS
PLEASE DISREGARD NOTES THAT DO NOT APPLY TO THIS PROJECT
C. ADDITIONAL NOTES
1. E.E.C. TO PROVIDE AND INSTALL 1" INDESTRUCTIBLE DRAIN LINE FROM WALK-IN REFRIGERATOR COILS TO FLOOR DRAIN...

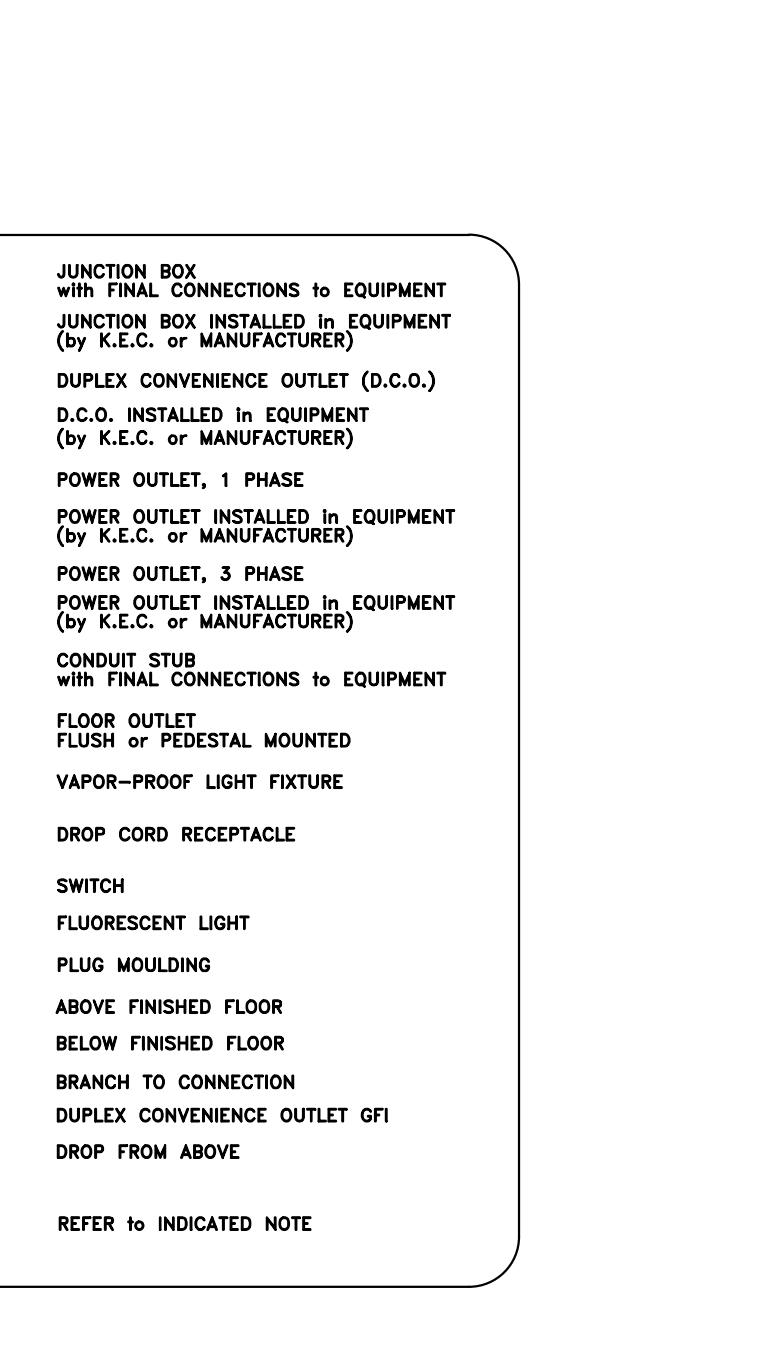


RELATED ELECTRICAL REQUIREMENTS
PLEASE DISREGARD NOTES THAT DO NOT APPLY TO THIS PROJECT
A. GENERAL NOTES
1. ALL WORK INDICATED ON THIS ELECTRICAL ROUGH-IN PLAN MUST BE COMPLETED BY OTHER THAN THE KITCHEN EQUIPMENT CONTRACTOR...

RELATED ELECTRICAL REQUIREMENTS
PLEASE DISREGARD NOTES THAT DO NOT APPLY TO THIS PROJECT
B. ELECTRICAL CONTRACTORS NOTES - CONTINUED:
5. AT ALL WALK-IN COOLER / FREEZER LOCATIONS SHOWN ON THIS PLAN:
a. ALL VAPOR PROOF LIGHT FIXTURES, AS PROVIDED BY THE KITCHEN EQUIPMENT CONTRACTOR...

RELATED ELECTRICAL REQUIREMENTS
PLEASE DISREGARD NOTES THAT DO NOT APPLY TO THIS PROJECT
B. ELECTRICAL CONTRACTORS NOTES - CONTINUED:
12. AN ISOLATED CIRCUIT WITH A CLEAR EARTH GROUND FOR ALL OTHER PROVIDED POINT OF SALE EQUIPMENT, CREDIT CARD TERMINALS AND VALIDATION MACHINES, PER THE MANUFACTURER'S SPECIFICATIONS...

RELATED ELECTRICAL REQUIREMENTS
PLEASE DISREGARD NOTES THAT DO NOT APPLY TO THIS PROJECT
C. ADDITIONAL NOTES
1. EXHAUST HOODS REQUIRE TWO (2) ELECTRICAL CONNECTIONS. ONE FOR HOOD LIGHTS AND FOR EXHAUST FAN...



Drawn: JAO, Checked: DTS, Date: 03-16-2017

REVISIONS table with columns: ISSUED FOR, DATE

Hilton Embassy Suites

FOOD SERVICE EQUIPMENT PLAN

QF410

NOT FOR CONSTRUCTION