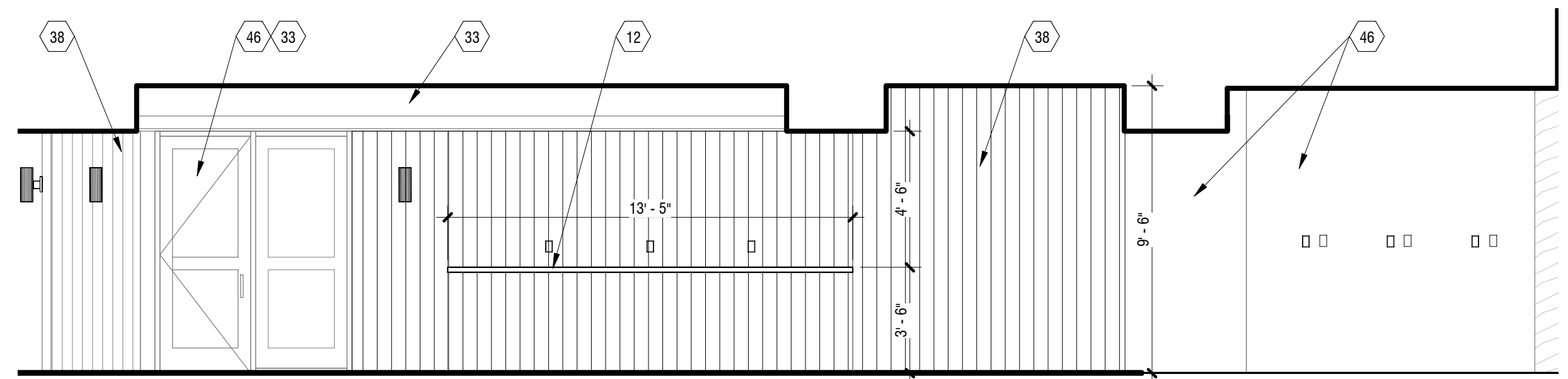


HORSESHOE BOOTH ELEVATION
1/4" = 1'-0" 2

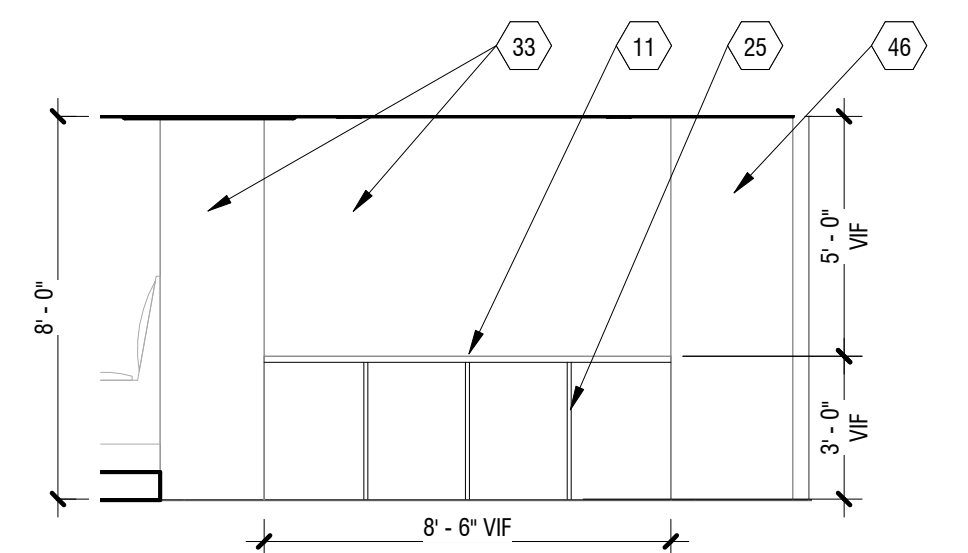


ENTRY ELEVATION
1/4" = 1'-0" 3

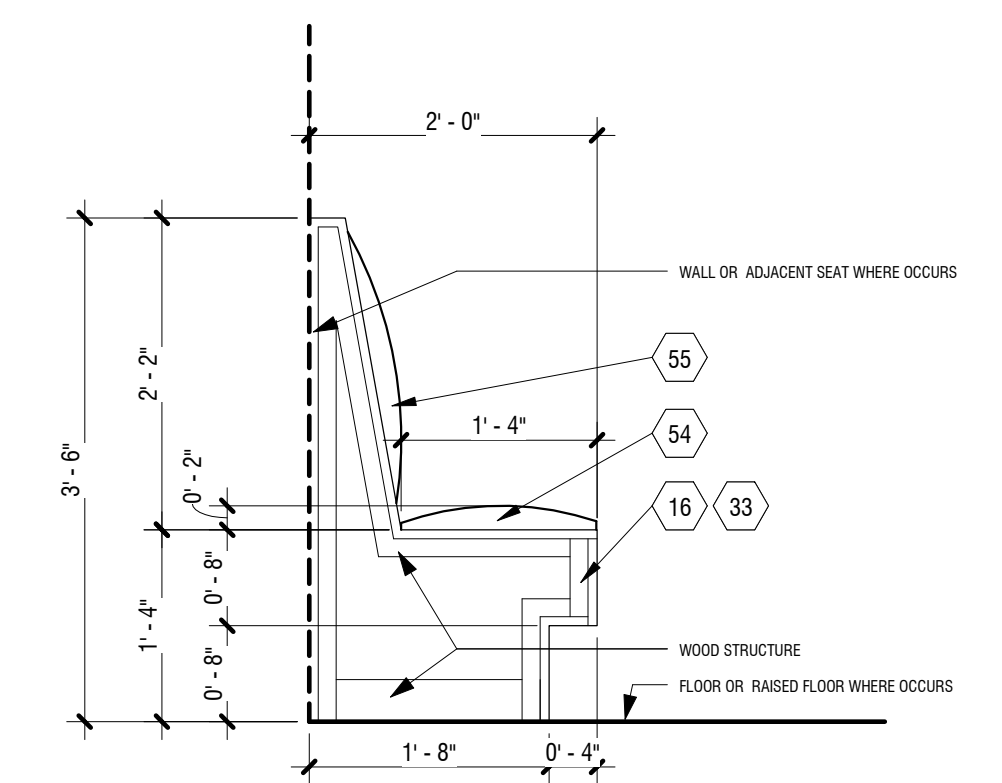
LEGEND - FLOOR PLAN

- EXISTING WALL TO REMAIN
- NEW WALL
- NEW PART HEIGHT WALL
- REFINISHED HARDWOOD FLOOR
- TILE-1
- TILE-2
- TILE-3
- EXISTING TILE FLOORING
- NEW 120V DUPLEX RECEPTACLE
(xx indicates distance above finish floor)
- NEW 120V DUPLEX RECEPTACLE W/ DEDICATED CIRCUIT
- NEW 120V DUPLEX RECEPTACLE W/ GROUND FAULT INTERRUPT PROTECTION
- NEW 120V QUADRUPLEX RECEPTACLE
- NEW DATA/VOICE, ASSUME SINGLE GANG BOX AT EACH LOCATION
- NEW 220V 30A 4 WIRE SINGLE PHASE CIRCUIT WITH NEMA L14-30R OUTLET
- NEW 220V 50A 3 WIRE SINGLE PHASE CIRCUIT WITH NEMA 6-50R OUTLET.

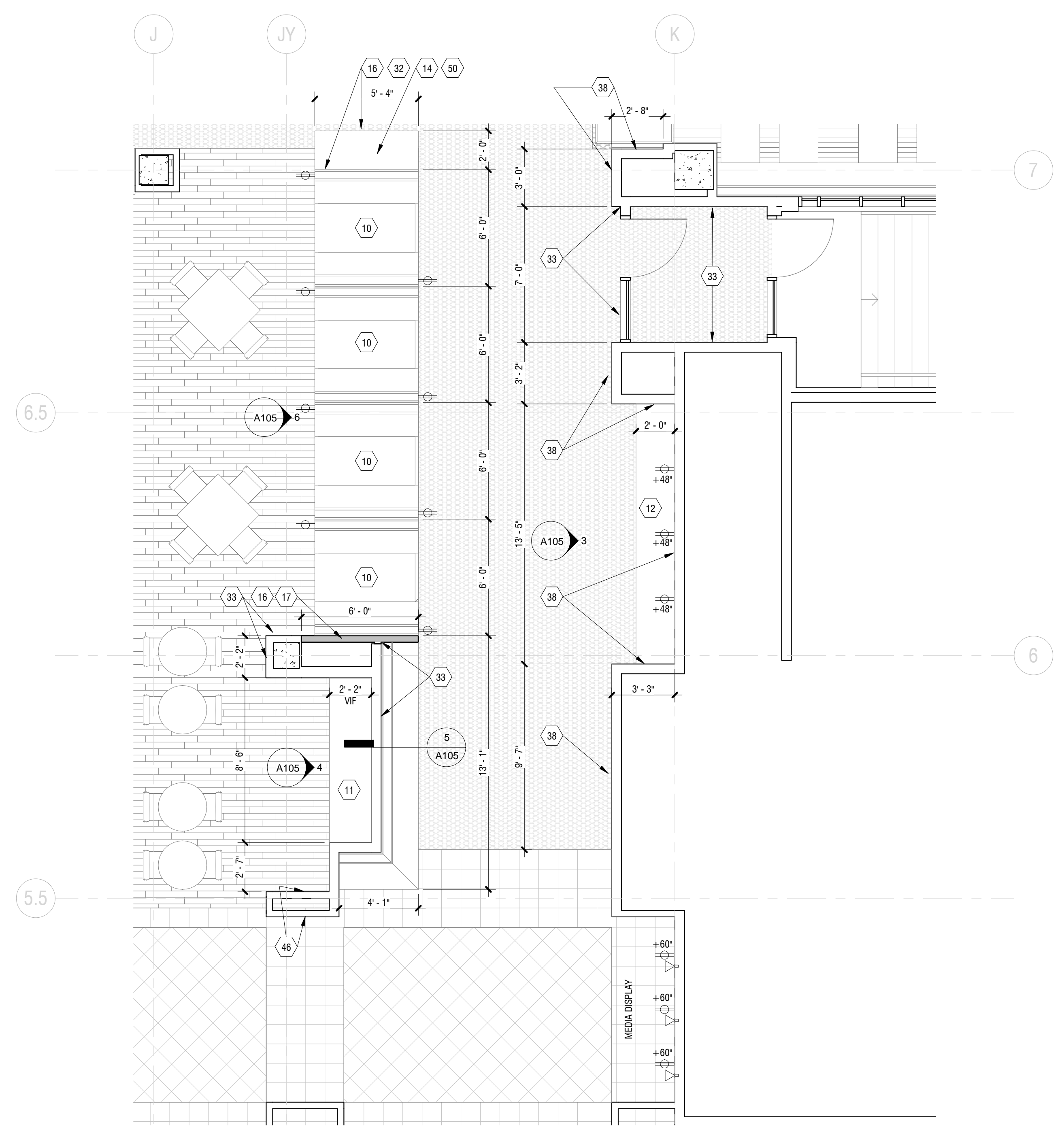
*** NOTE ALL EXISTING ELECTRICAL AND DATA LOCATIONS / OUTLETS TO REMAIN.



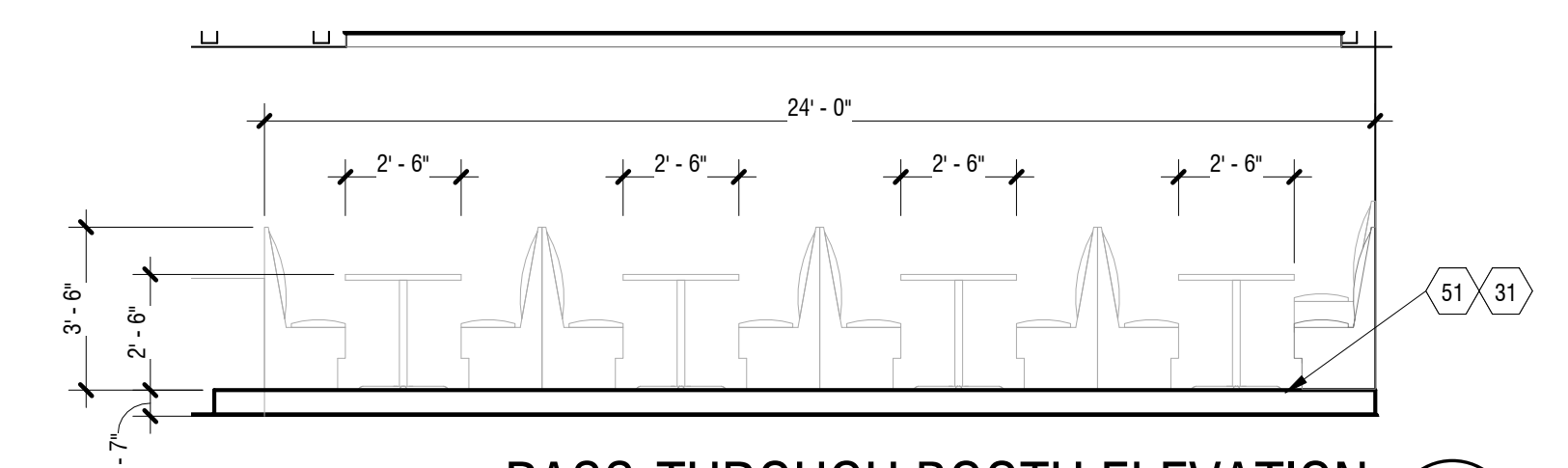
EXISTING SIDE STATION ELEVATION
1/4" = 1'-0" 4



TYPICAL BENCH SEAT DETAIL SECTION
3/4" = 1'-0" 5



ENLARGED PLAN ENTRY
1/4" = 1'-0" 1



PASS-THROUGH BOOTH ELEVATION
1/4" = 1'-0" 6

Project Location
Hilton Market
921 SW 6th Ave.
Portland, OR 97204



THESE DRAWINGS ARE FOR CONSTRUCTION BY JEAN-PIERRE VEILLET SITeworks, INC. ONLY

Date: 2014.12.08

Lead Designer: JEAN-PIERRE VEILLET

Architect: JESSAMYN GRIFFIN

Drawn By: DSM / JPM

Phase: CONSTRUCTION

Revisions:

#	Description	Date

Sheet Name
ENLARGED PLANS & ELEVATIONS - ENTRY

Sheet No.

A105