

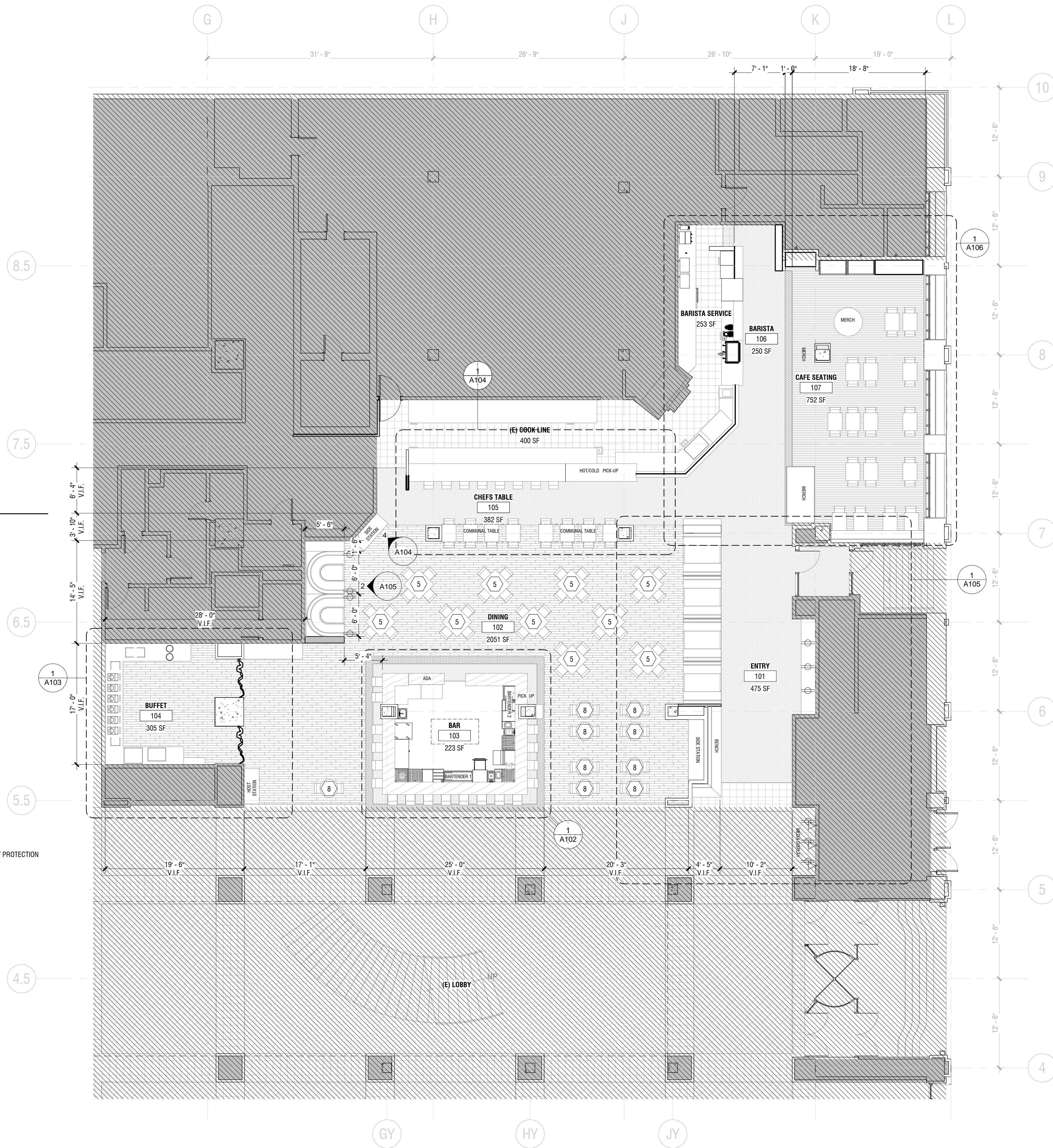
KEYNOTES - ARCHITECTURAL

- 1 TILE-1, SEE MATERIAL LEGEND
- 2 TILE-2, SEE MATERIAL LEGEND
- 3 TILE-3, SEE MATERIAL LEGEND
- 4 TILE-4, SEE MATERIAL LEGEND
- 5 36" x 36" 6/4 QUARTER-SAWN WHITE OAK TABLE TOPS. DURABLE, CLEAR FINISH. (DALYS AQUASPAR OR EQUIV.) RE-USE EXISTING TABLE BASES.
- 6 24" x 30" 6/4 QUARTER-SAWN WHITE OAK TABLE TOPS. DURABLE, CLEAR FINISH. (DALYS AQUASPAR OR EQUIV.)
- 7 1" x 2" BLACKENED STEEL TUBE FRAME FOR COUNTERTOP SUPPORT. PROVIDE INTERMEDIATE STRUCTURE @ 4'-0" O.C. MIN. CONNECT TO NEW / EXISTING STRUCTURE.
- 8 30" ROUND 6/4 QUARTER-SAWN WHITE OAK TABLE TOPS. DURABLE, CLEAR FINISH. 24" TALL, BLACKENED 2" x 2" STEEL TABLE BASE (DALYS AQUASPAR OR EQUIV.)
- 9 12" x 30" 6/4 QUARTER SAWN WHITE OAK DROP-IN TABLE LEAF. PROVIDE CONNECTABILITY TO STEEL SUPPORT AND ADJACENT TABLE TOPS. DURABLE CLEAR FINISH (DALYS AQUASPAR OR EQUIV.)
- 10 BOOTH 6/4 QUARTER-SAWN WHITE OAK TABLE TOPS. DURABLE, CLEAR FINISH. (DALYS AQUASPAR OR EQUIV.) NEW STEEL TABLE BASE SUPPORT ANCHORED TO FLOOR
- 11 CTP-1, SEE MATERIAL LEGEND
- 12 CTP-2, SEE MATERIAL LEGEND
- 13 CTP-3, SEE MATERIAL LEGEND
- 14 CTP-4, SEE MATERIAL LEGEND
- 15 CTP-5, SEE MATERIAL LEGEND
- 16 REPURPOSED EXISTING WOOD PANELING, PREP FOR NEW PAINT
- 17 NEW WALL: 2x4 WOOD STUDS @ 16" O.C., 3/4" PLYWOOD EACH SIDE, PROVIDE STEEL STANCHIONS AS REQ.
- 18 FRP-1, SEE MATERIAL LEGEND
- 19 BLACKENED STEEL COAT HOOKS @ 30" O.C.
- 20 REPURPOSED EXISTING METAL FOOTRAIL & BRACKETS. MODIFY AS NECESSARY TO FIT.
- 21 2" x 2" BLACKENED STEEL TUBE FRAME, ATTACHED TO FLOOR & CEILING STRUCTURE ABOVE DROP CEILING.
- 22 GLASS SHELVING FOR LIQUOR DISPLAY
- 23 16 GA. BLACKENED STEEL PANEL
- 24 CASEWORK - BLACK FORMICA BOXES W/ ADJUSTABLE SHELVING, FLUSH WOOD SLAB DOORS, PAINT-2 FINISH. ORB PULLS
- 25 (E) CASEWORK - REFINISH EXISTING DOORS W/ PAINT-2 FINISH. REPAIR EXISTING DOORS / HARDWARE AS NECESSARY. ORB PULLS.
- 26 CASEWORK - FINISH PLYWOOD BOXES W/ PULL-OUT DRAWERS. HEAVY-DUTY DRAWER HARDWARE, SINGLE PANEL DOORS, PAINT-2 FINISH
- 27 MOBILE TABLE - 2" x 2" BLACKENED STEEL TUBE FRAME. 1" x 2" BLACKENED STEEL COUNTERTOP UNDERSHELF SUPPORT. 16 GA. BLACKENED STEEL UNDERSHELF. 4" TWO-WAY LOCKING CASTERS, 36" TABLE HEIGHT.
- 28 MOBILE HOST STAND - BLACK FORMICA BOXES W/ ADJUSTABLE OPEN SHELVING. BLACKENED STEEL PANEL ON EXTERIOR OF FRONT & SIDES. 4" TWO-WAY LOCKING CASTERS, 42" COUNTER HEIGHT.
- 29 HEAVY DUTY SHELVING FOR PLATES, BOWLS, & GLASS WARE.
- 30 COIL DRAPERY ON TRACK. 1/4" WEAVE, 18 GA. ALUMINUM ANTIQUE BRONZE FINISH.
- 31 PAINT-1, SEE MATERIAL LEGEND
- 32 PAINT-2, SEE MATERIAL LEGEND
- 33 PAINT-3, SEE MATERIAL LEGEND
- 34 PAINT-4, SEE MATERIAL LEGEND
- 35 EXISTING SPEAKERS / LOCATIONS TO REMAIN
- 36 EXISTING WALL STRUCTURE TO REMAIN. PROVIDE NEW STANCHIONS, COUNTERTOP SUPPORTS AS NECESSARY.
- 37 NEW WALL TO ALIGN W/ EXISTING. NEW PLYWOOD SUBSTRATE EACH SIDE.
- 38 WDP-1, SEE MATERIAL LEGEND
- 39 FLR-1, SEE MATERIAL LEGEND
- 40 WDFLR-1, SEE MATERIAL LEGEND
- 41 MOSAIC-1, SEE MATERIAL LEGEND
- 42 1' - 6" DEEP ALCOVE FOR FIRE WOOD STORAGE
- 43 CHASE FOR GLYCOL, PLUMBING, & ELECTRICAL
- 44 REPAIR WOOD TRIM AS NECESSARY. PROVIDE MATCHING WOOD TRIM @ SOFFIT RETURN FOR NEW SUSPENDED CEILING
- 45 MODIFY HVAC GRILL TO DISTRIBUTE AIR AWAY FROM HEAT LAMPS
- 46 EXISTING WOOD PANEL TO REMAIN - PROVIDE ADDITIONAL CLEAR COAT ON PAINTED WOOD PANEL, V.I.F.
- 47 NEW STAINLESS STEEL DOUBLE SWINGING DOOR
- 48 NEW BRASS FOOT RAIL AND BRACKETS TO MATCH EXISTING
- 49 NEW VERTICAL TEMPERED GLASS GUARD WITH VERTICAL STEEL SUPPORTS @ 4' - 0" O.C. MIN
- 50 CASEWORK - NEW MOBILE CONDIMENT STAND, BLACK FORMICA INTERIOR WITH CUTOUT FOR TRASH AND COMPOST. SINGLE PANEL DOORS. ORB PULLS
- 51 NEW RAISED FLOOR, 2x6 WOOD SLEEPERS W/ 3/4" PLYWOOD SUBSTRATE AND 3/4" REPURPOSED WOOD PANEL FLOORING
- 52 LED STRIP LIGHT SEE RCP
- 53 BLACKENED STEEL I-BEAM TO SUPPORT TABLE TOPS. STRUCTURE RETURNS TO FLOOR AT EITHER END.
- 54 UPHOLSTERY-1, SEE MATERIAL LEGEND
- 55 UPHOLSTERY-2, SEE MATERIAL LEGEND
- 56 MERCHANDISE SHELVING, 2" x 2" BLACKENED STEEL FRAME, 1" x 2" BLACKENED STEEL SHELVING SUPPORTS, 4/4 QUARTER SAWN WHITE OAK SHELVING, CLEAR FINISH

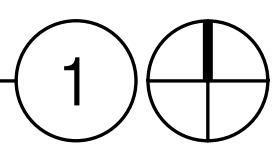
LEGEND - FLOOR PLAN

- EXISTING WALL TO REMAIN
- NEW WALL
- NEW PART HEIGHT WALL
- REFINISHED HARDWOOD FLOOR
- TILE-1
- TILE-2
- TILE-3
- EXISTING TILE FLOORING
- NEW 120V DUPLEX RECEPTACLE (xx indicates distance above finish floor)
- NEW 120V DUPLEX RECEPTACLE W/ DEDICATED CIRCUIT
- NEW 120V DUPLEX RECEPTACLE W/ GROUND FAULT INTERRUPT PROTECTION
- NEW 120V QUADRUPLEX RECEPTACLE
- NEW DATA/VOICE, ASSUME SINGLE GANG BOX AT EACH LOCATION
- NEW 220V 30A 4 WIRE SINGLE PHASE CIRCUIT WITH NEMA L14-30R OUTLET
- NEW 220V 50A 3 WIRE SINGLE PHASE CIRCUIT WITH NEMA 6-50R OUTLET.

*** NOTE ALL EXISTING ELECTRICAL AND DATA LOCATIONS / OUTLETS TO REMAIN.



PROPOSED RESTAURANT FLOOR PLAN
1/8" = 1'-0"



Project Location
Hilton Market
921 SW 6th Ave.
Portland, OR 97204



THESE DRAWINGS ARE FOR CONSTRUCTION BY JEAN-PIERRE VEILLET SITEWORKS, INC. ONLY

Date: 2014.12.08

Lead Designer: JEAN-PIERRE VEILLET

Architect: JESSAMYN GRIFFIN

Drawn By: DSM / JPM

Phase: CONSTRUCTION

Revisions:

#	Description	Date

Sheet Name
PROPOSED RESTAURANT FLOOR PLAN

Sheet No.

A101