

COPYRIGHT
UNAUTHORIZED USE OF THE FOODSERVICE DESIGNS, DETAILS, AutoCAD®BLOCKS, AND SPECIFICATIONS CONTAINED IN THESE DOCUMENTS IS STRICTLY PROHIBITED. NSD, INC. MAINTAINS OWNERSHIP OF SAME. THIS PROHIBITION EXTENDS FROM PRINTED MATERIAL TO ANY ELECTRONIC VERSION OF THE SAME. NO USE, OTHER THAN THAT FOR WHICH IT IS INTENDED, IS STRICTLY PROHIBITED WITHOUT WRITTEN PERMISSION FROM NEXT STEP DESIGN, INC. ALL RIGHTS RESERVED.

EQUIPMENT FLOOR PLAN

SCALE 1/4" = 1'-0"

HILTON
HOTELS &
RESORTS

HERB
N' KITCHEN

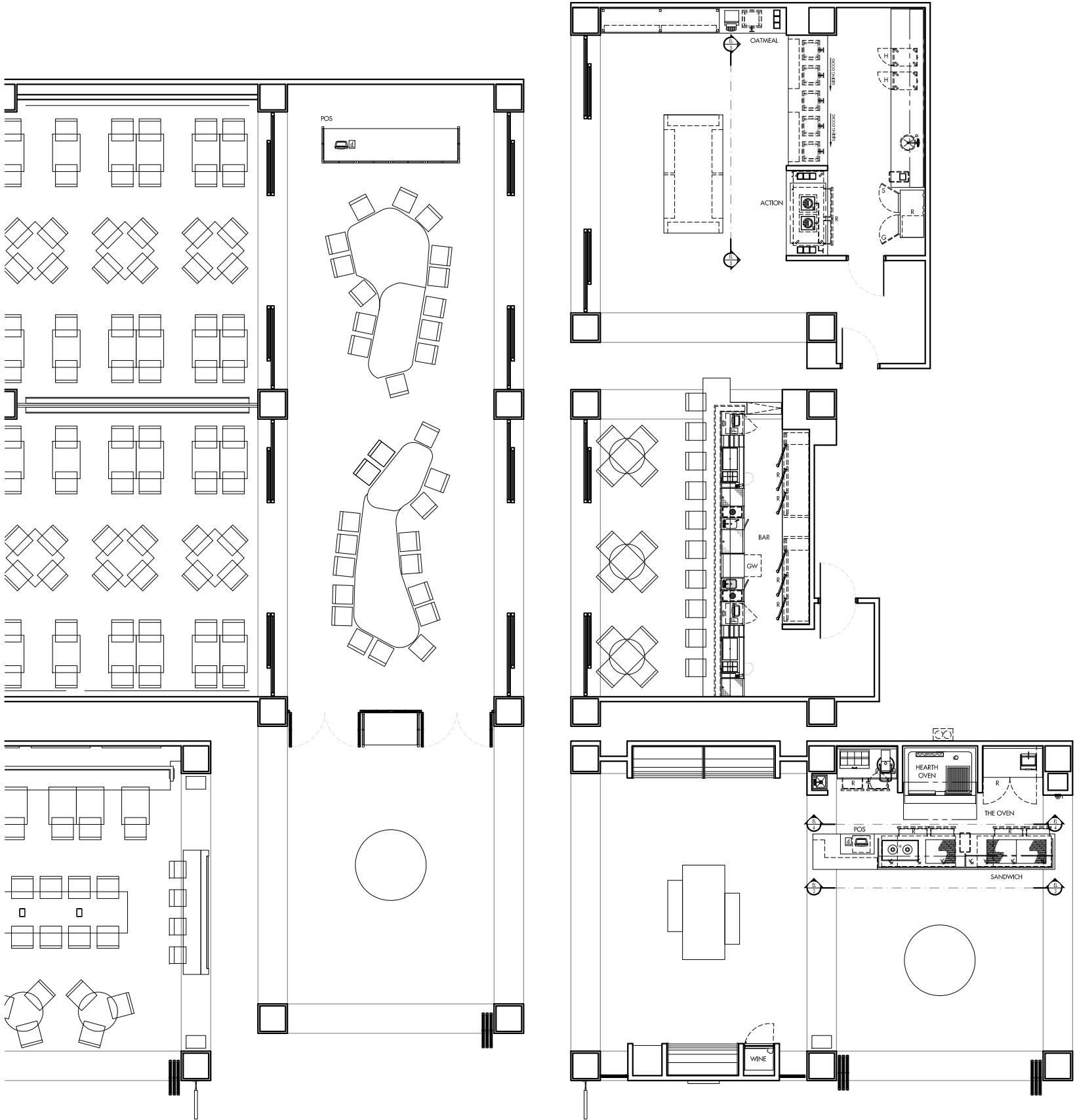
OWNER:
HILTON WORLDWIDE
7930 JONES BRANCH DRIVE
MCLEAN, VA 22102

GUILD 13
506 2ND AVENUE
SUITE 1021 B
SEATTLE WA 98104
866.838.1684
guild13.com

nsd
Next Step Design
FOODSERVICE CONSULTANTS
913 West Street, Suite A
Annapolis, MD 21401
Ph: (410) 263-1200
Fx: (410) 280-1340
www.nextstepdesign.com

DESIGN	DOCUMENTS
PROJECT	: D-0496
DRAWN	: EM
CHECKED	: BB
DATE	: 03 APRIL 2014
REVISED	:
TITLE	: FOODSERVICE
	: EQUIPMENT FLOOR PLAN

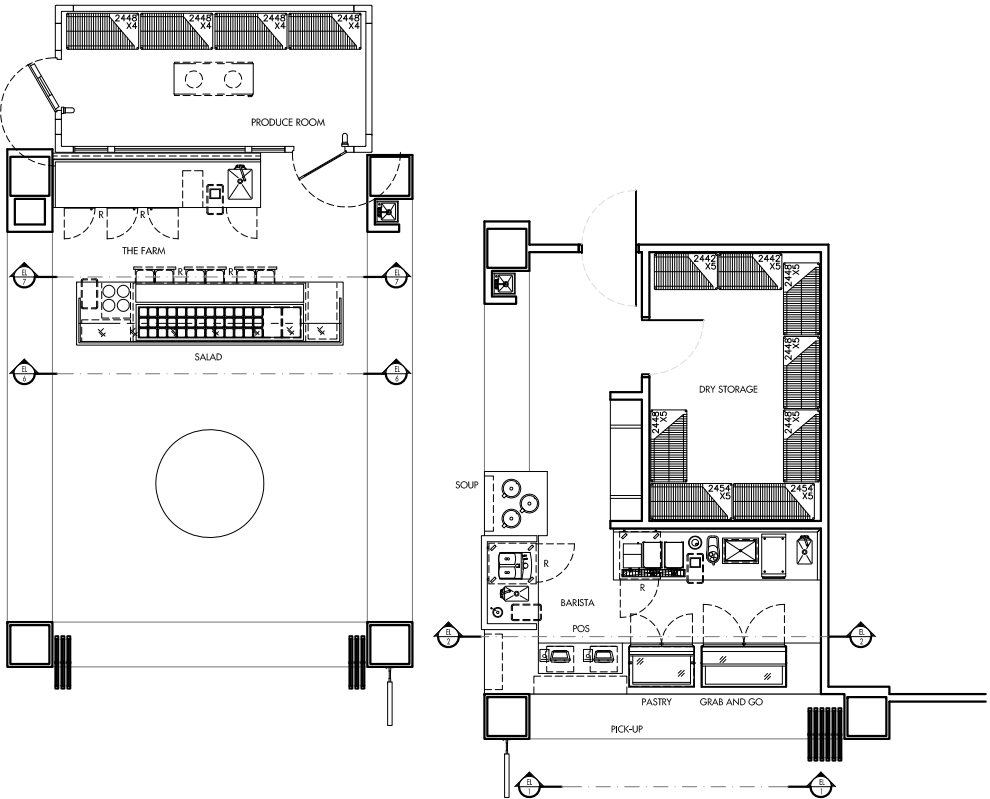
FS-1



EQUIPMENT OVERVIEW PLAN

SCALE 3/32" = 1'-0"

COPYRIGHT
UNAUTHORIZED USE OF THE FOODSERVICE DESIGNS, DETAILS, AutoCAD® BLOCKS, AND SPECIFICATIONS CONTAINED IN THESE DOCUMENTS IS STRICTLY PROHIBITED. NSD, INC. MAINTAINS OWNERSHIP OF SAME. THIS PROHIBITION EXTENDS FROM PRINTED MATERIAL TO ANY ELECTRONIC VERSION OF THE SAME. NO USE, OTHER THAN THAT FOR WHICH IT IS INTENDED, IS STRICTLY PROHIBITED WITHOUT WRITTEN PERMISSION FROM NEXT STEP DESIGN, INC. ALL RIGHTS RESERVED.



HILTON
HOTELS &
RESORTS

HERB
N' KITCHEN

OWNER:
HILTON WORLDWIDE
7930 JONES BRANCH DRIVE
MCLEAN, VA 22102

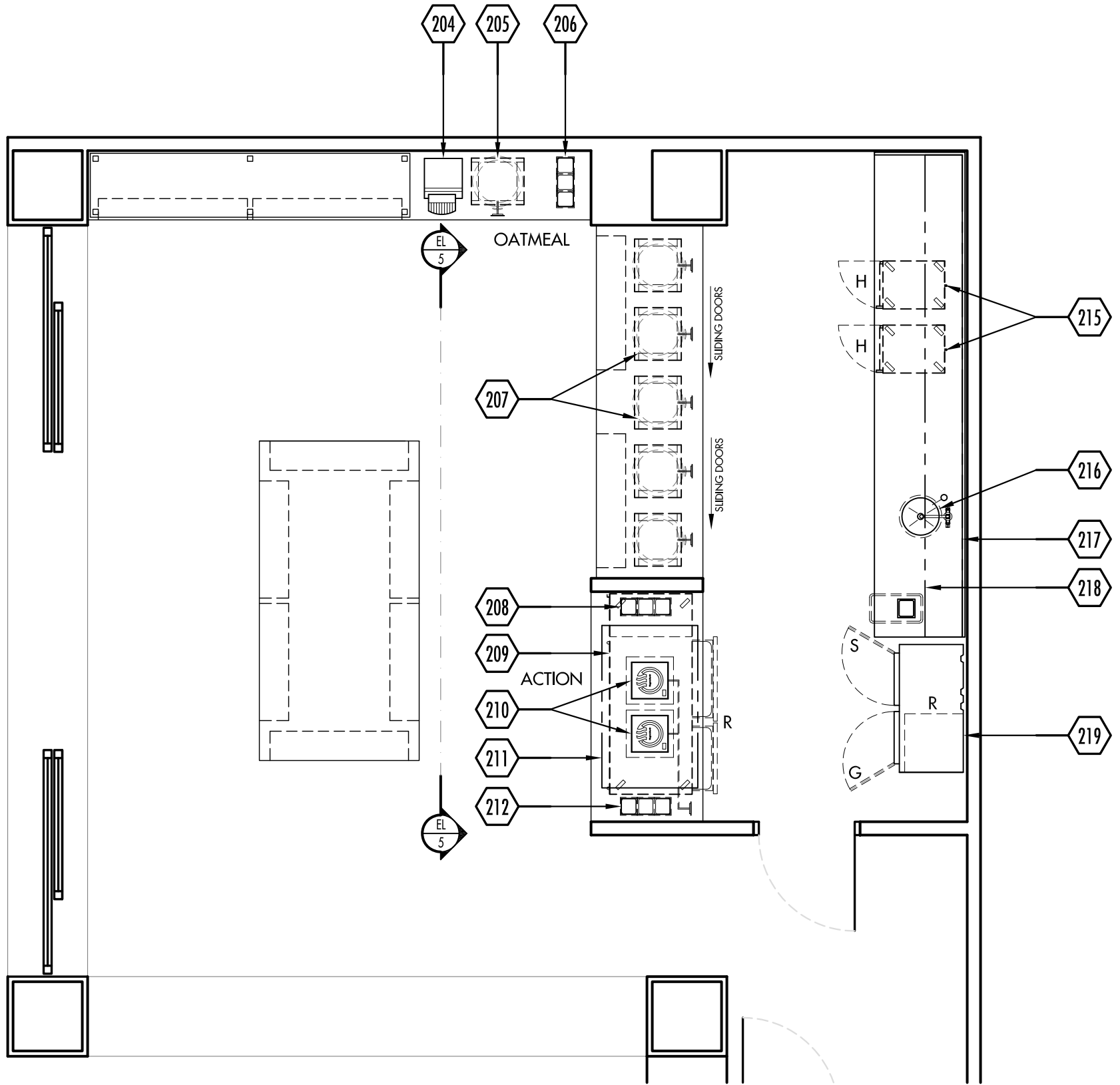
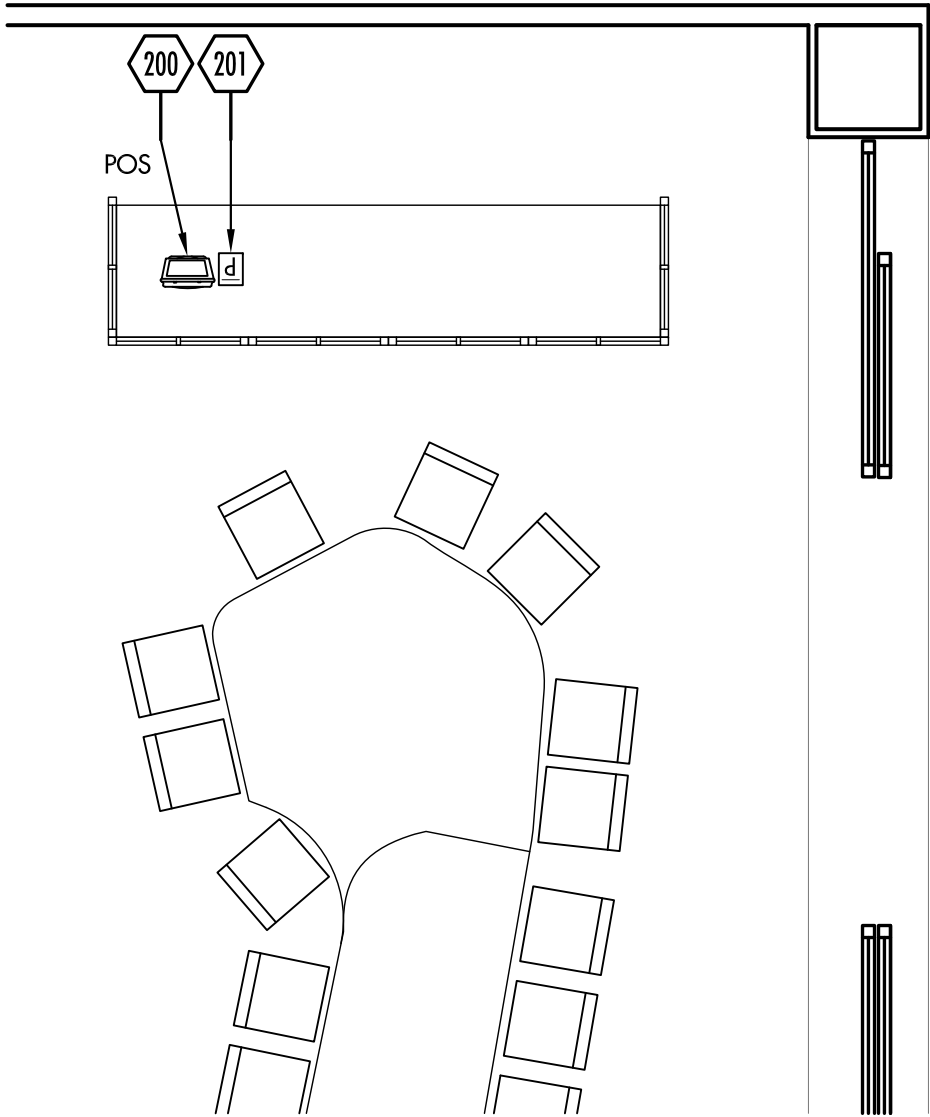
GUILD 13
506 2ND AVENUE
SUITE 1021 B
SEATTLE WA 98104
866.838.1684
guild13.com

nsd
Next Step Design
FOODSERVICE CONSULTANTS
913 West Street, Suite A
Annapolis, MD 21401
Ph: (410) 263-1200
Fx: (410) 280-1340
www.nextstepdesign.com

DESIGN
DOCUMENTS
PROJECT : D-0496
DRAWN : EM
CHECKED : BB
DATE : 03 APRIL 2014
REVISED :

TITLE : FOODSERVICE
EQUIPMENT OVERVIEW PLAN

FS-2.0



EQUIPMENT FLOOR PLAN

SCALE 1/4" = 1'-0"

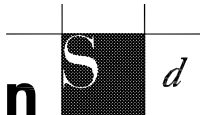
COPYRIGHT
UNAUTHORIZED USE OF THE FOODSERVICE DESIGNS, DETAILS, AutoCAD®BLOCKS, AND SPECIFICATIONS CONTAINED IN THESE DOCUMENTS IS STRICTLY PROHIBITED. NSD, INC. MAINTAINS OWNERSHIP OF SAME. THIS PROHIBITION EXTENDS FROM PRINTED MATERIAL TO ANY ELECTRONIC VERSION OF THE SAME. NO USE, OTHER THAN THAT FOR WHICH IT IS INTENDED, IS STRICTLY PROHIBITED WITHOUT WRITTEN PERMISSION FROM NEXT STEP DESIGN, INC. ALL RIGHTS RESERVED.

HILTON
HOTELS &
RESORTS

HERB
N' KITCHEN

OWNER:
HILTON WORLDWIDE
7930 JONES BRANCH DRIVE
MCLEAN, VA 22102

GUILD 13
506 2ND AVENUE
SUITE 1021 B
SEATTLE WA 98104
866.838.1684
guild13.com

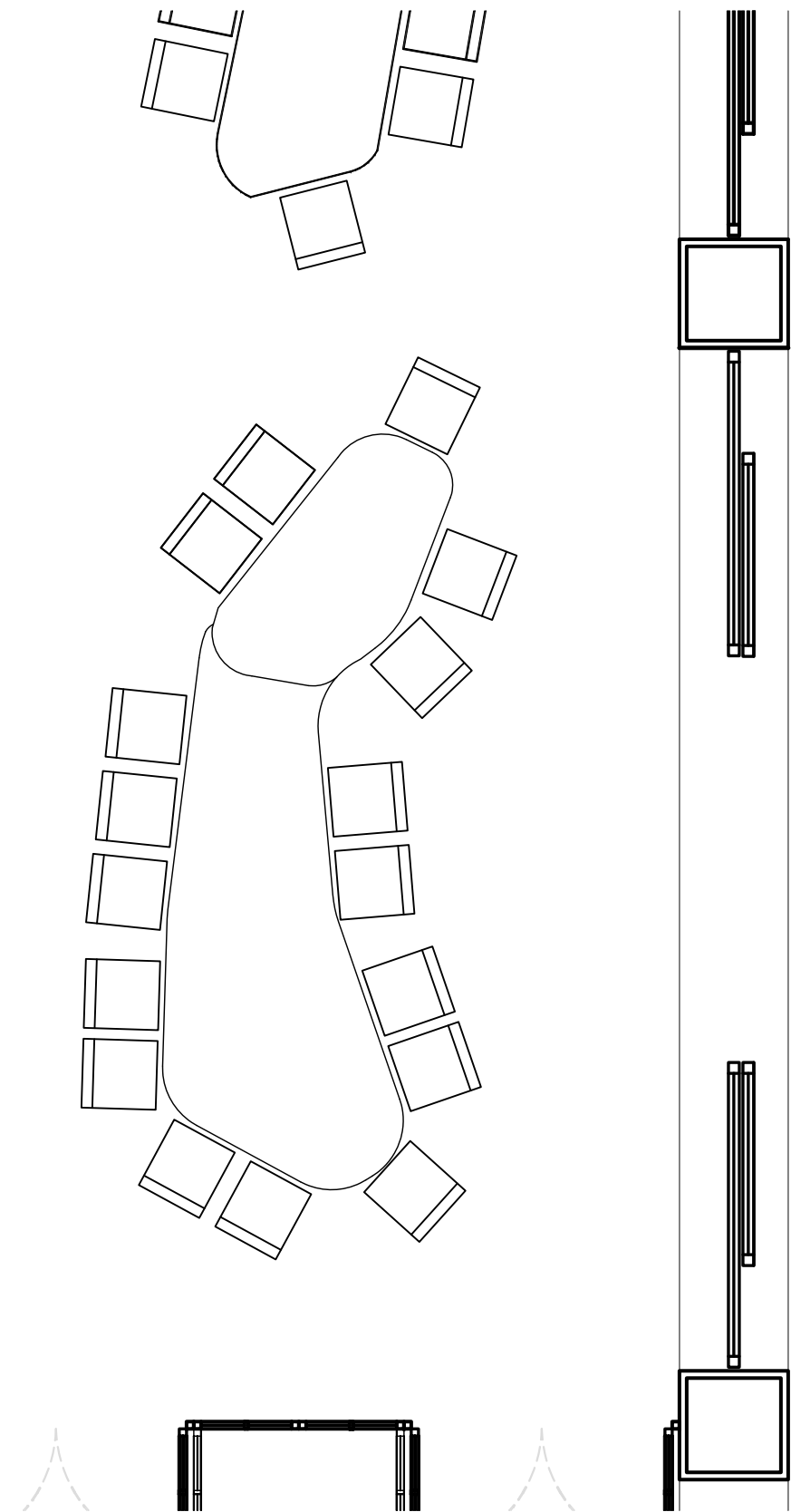


Next Step Design
FOODSERVICE CONSULTANTS
913 West Street, Suite A
Annapolis, MD 21401

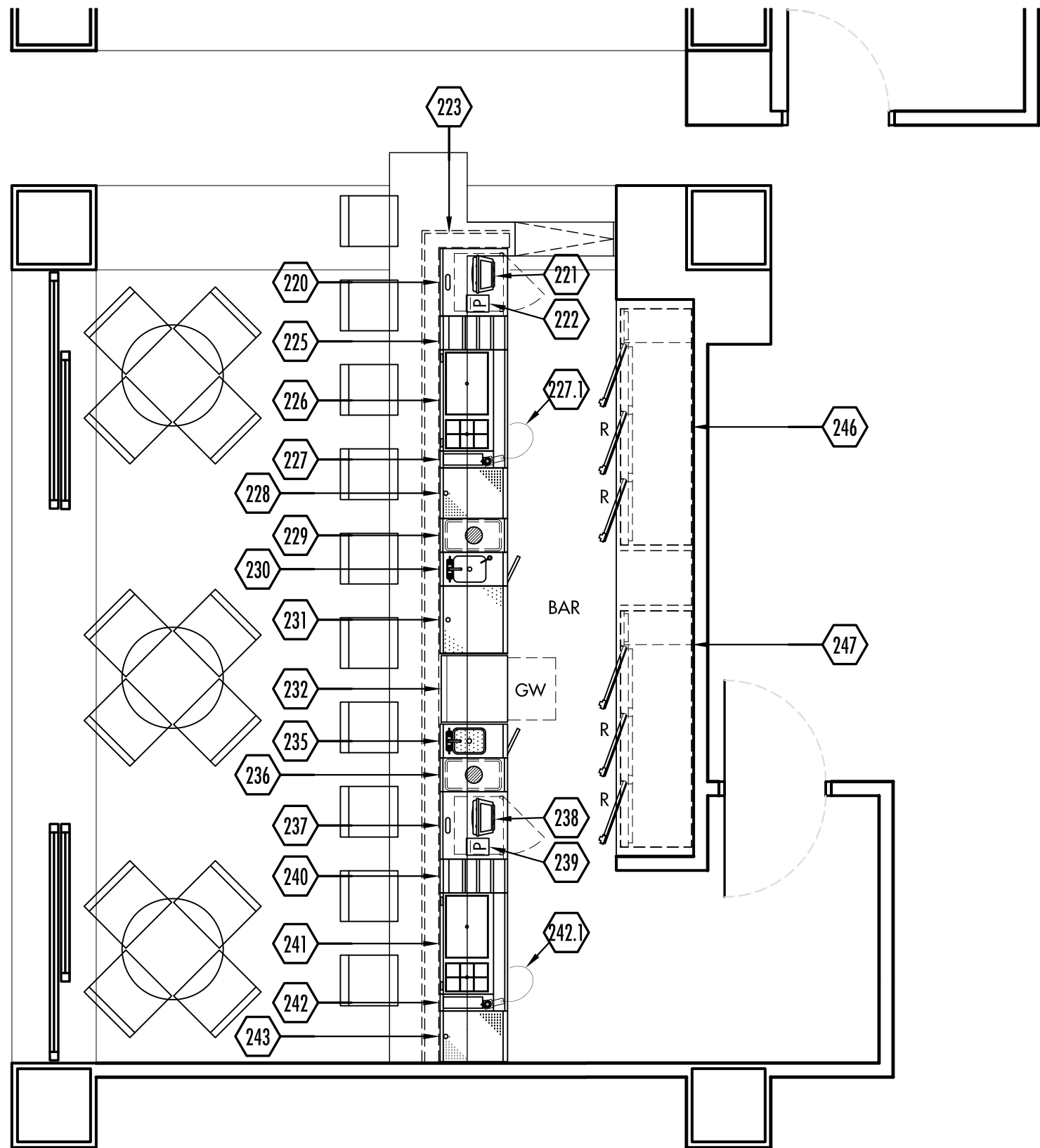
Ph: (410) 263-1200
Fx: (410) 280-1340
www.nextstepdesign.com

DESIGN	
DOCUMENTS	
PROJECT	: D-0496
DRAWN	: EM
CHECKED	: BB
DATE	: 03 APRIL 2014
REVISED	:
TITLE	: FOODSERVICE
	: EQUIPMENT FLOOR PLAN

FS-2.1



COPYRIGHT
UNAUTHORIZED USE OF THE FOODSERVICE DESIGNS, DETAILS, AutoCAD®BLOCKS, AND SPECIFICATIONS CONTAINED IN THESE DOCUMENTS IS STRICTLY PROHIBITED. NSD, INC. MAINTAINS OWNERSHIP OF SAME. THIS PROHIBITION EXTENDS FROM PRINTED MATERIAL TO ANY ELECTRONIC VERSION OF THE SAME. NO USE, OTHER THAN THAT FOR WHICH IT IS INTENDED, IS STRICTLY PROHIBITED WITHOUT WRITTEN PERMISSION FROM NEXT STEP DESIGN, INC. ALL RIGHTS RESERVED.



EQUIPMENT FLOOR PLAN

SCALE 1/4" = 1'-0"

HILTON
HOTELS &
RESORTS

HERB
N' KITCHEN

OWNER:
HILTON WORLDWIDE
7930 JONES BRANCH DRIVE
MCLEAN, VA 22102

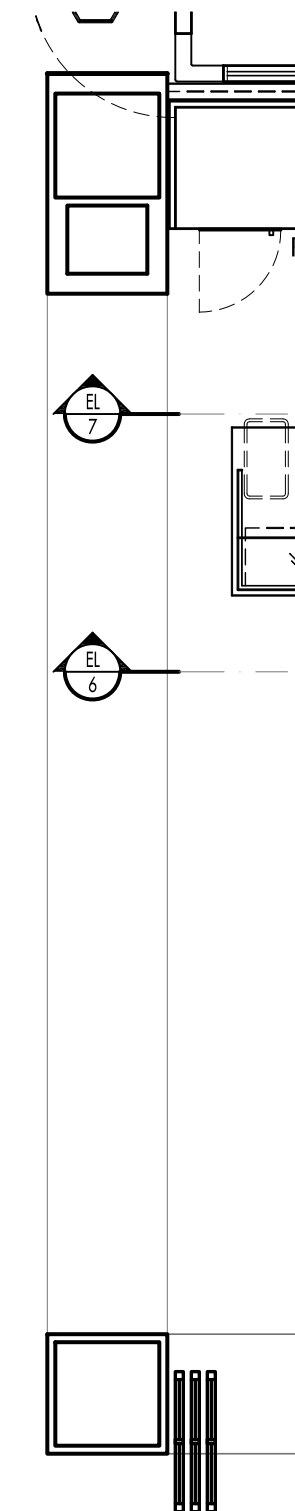
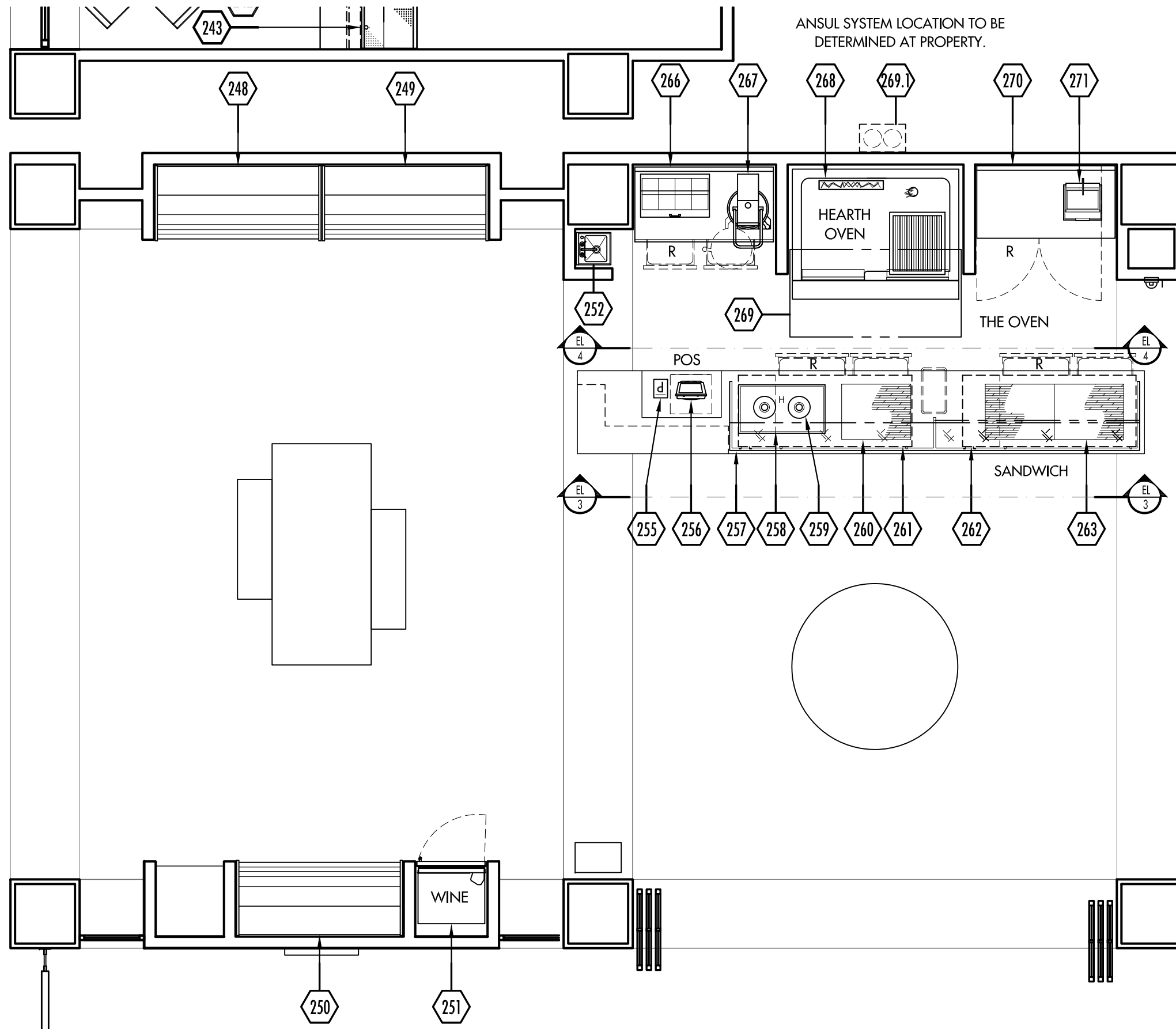
GUILD 13
506 2ND AVENUE
SUITE 1021 B
SEATTLE WA 98104
866.838.1684
guild13.com

n S d
Next Step Design
FOODSERVICE CONSULTANTS
913 West Street, Suite A
Annapolis, MD 21401
Ph: (410) 263-1200
Fx: (410) 280-1340
www.nextstepdesign.com

DESIGN
DOCUMENTS
PROJECT : D-0496
DRAWN : EM
CHECKED : BB
DATE : 03 APRIL 2014
REVISED :

TITLE : FOODSERVICE
EQUIPMENT FLOOR PLAN

FS-2.2



COPYRIGHT©
UNAUTHORIZED USE OF THE FOODSERVICE DESIGNS, DETAILS, AutoCAD®BLOCKS, AND SPECIFICATIONS CONTAINED IN THESE DOCUMENTS IS STRICTLY PROHIBITED. NSD, INC. MAINTAINS OWNERSHIP OF SAME. THIS PROHIBITION EXTENDS FROM PRINTED MATERIAL TO ANY ELECTRONIC VERSION OF THE SAME. NO USE, OTHER THAN THAT FOR WHICH IT IS INTENDED, IS STRICTLY PROHIBITED WITHOUT WRITTEN PERMISSION FROM NEXT STEP DESIGN, INC. ALL RIGHTS RESERVED.

EQUIPMENT FLOOR PLAN

SCALE 1/4" = 1'-0"

HILTON
HOTELS &
RESORTS

HERB
N' KITCHEN

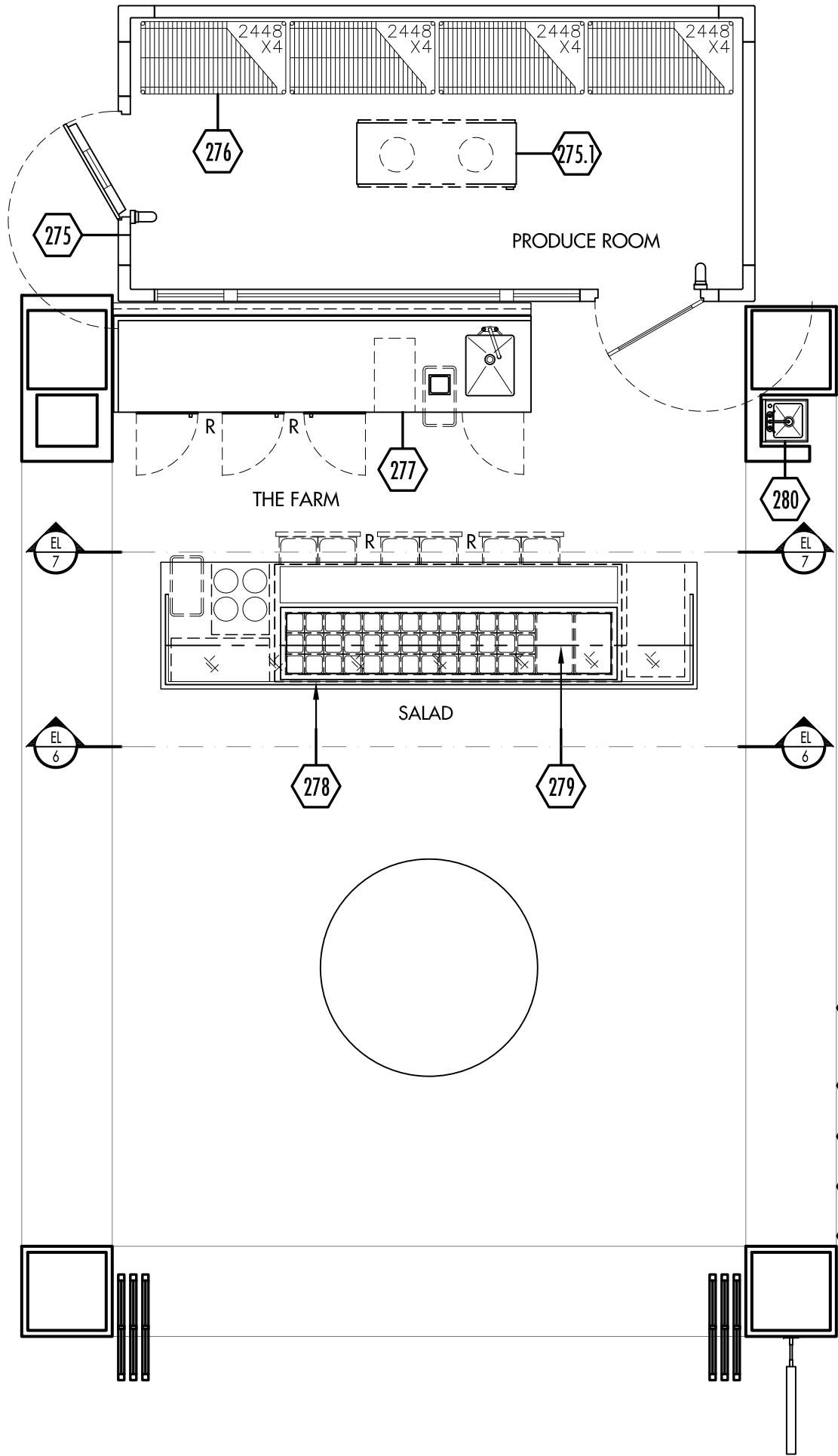
OWNER:
HILTON WORLDWIDE
7930 JONES BRANCH DRIVE
MCLEAN, VA 22102

GUILD 13
506 2ND AVENUE
SUITE 1021 B
SEATTLE WA 98104
866.838.1684
guild13.com

n S d
Next Step Design
FOODSERVICE CONSULTANTS
913 West Street, Suite A
Annapolis, MD 21401
Ph: (410) 263-1200
Fx: (410) 280-1340
www.nextstepdesign.com

DESIGN	
DOCUMENTS	
PROJECT	: D-0496
DRAWN	: EM
CHECKED	: BB
DATE	: 03 APRIL 2014
REVISED	:
TITLE	: FOODSERVICE
	: EQUIPMENT FLOOR PLAN

FS-2.3

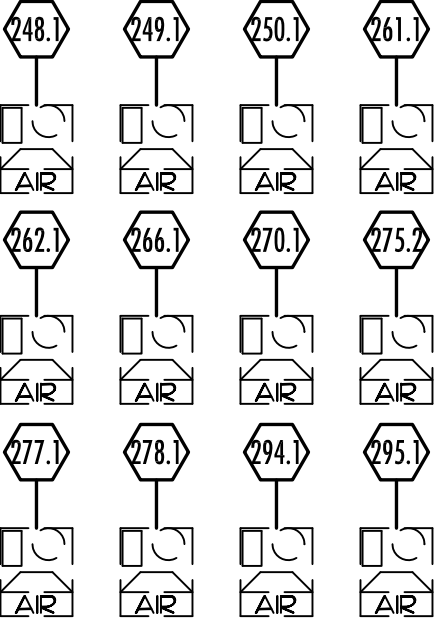
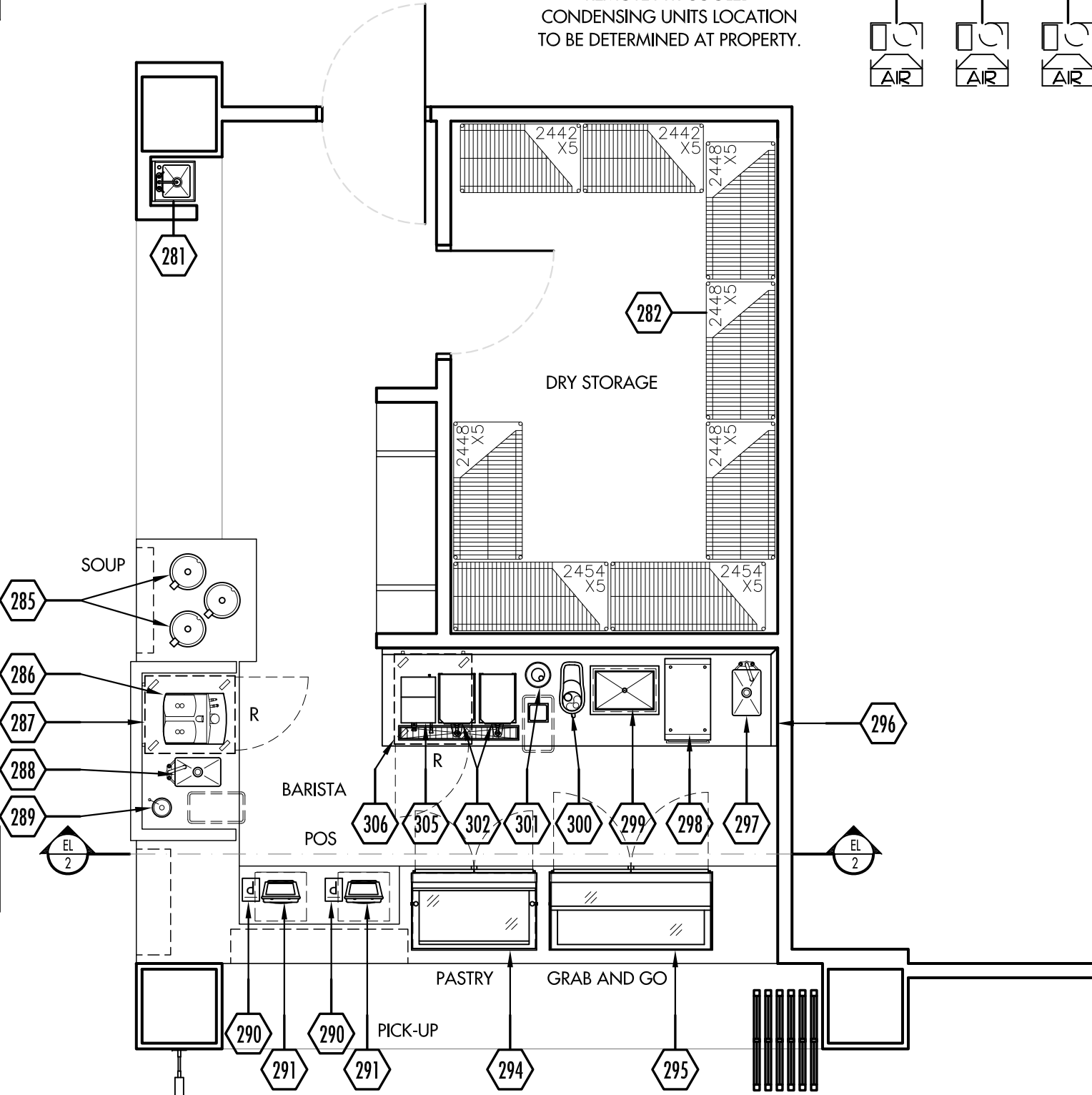


EQUIPMENT FLOOR PLAN

SCALE 1/4" = 1'-0"

COPYRIGHT
UNAUTHORIZED USE OF THE FOODSERVICE DESIGNS, DETAILS, AutoCAD®BLOCKS, AND SPECIFICATIONS CONTAINED IN THESE DOCUMENTS IS STRICTLY PROHIBITED. NSD, INC. MAINTAINS OWNERSHIP OF SAME. THIS PROHIBITION EXTENDS FROM PRINTED MATERIAL TO ANY ELECTRONIC VERSION OF THE SAME. NO USE, OTHER THAN THAT FOR WHICH IT IS INTENDED, IS STRICTLY PROHIBITED WITHOUT WRITTEN PERMISSION FROM NEXT STEP DESIGN, INC. ALL RIGHTS RESERVED.

REMOTE AIR COOLED
CONDENSING UNITS LOCATION
TO BE DETERMINED AT PROPERTY.

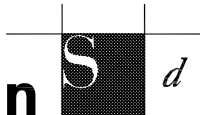


HILTON
HOTELS &
RESORTS

HERB
N' KITCHEN

OWNER:
HILTON WORLDWIDE
7930 JONES BRANCH DRIVE
MCLEAN, VA 22102

GUILD 13
506 2ND AVENUE
SUITE 1021 B
SEATTLE WA 98104
866.838.1684
guild13.com



Next Step Design
FOODSERVICE CONSULTANTS
913 West Street, Suite A
Annapolis, MD 21401

Ph: (410) 263-1200
Fx: (410) 280-1340
www.nextstepdesign.com

DESIGN
DOCUMENTS

PROJECT : D-0496

DRAWN : EM

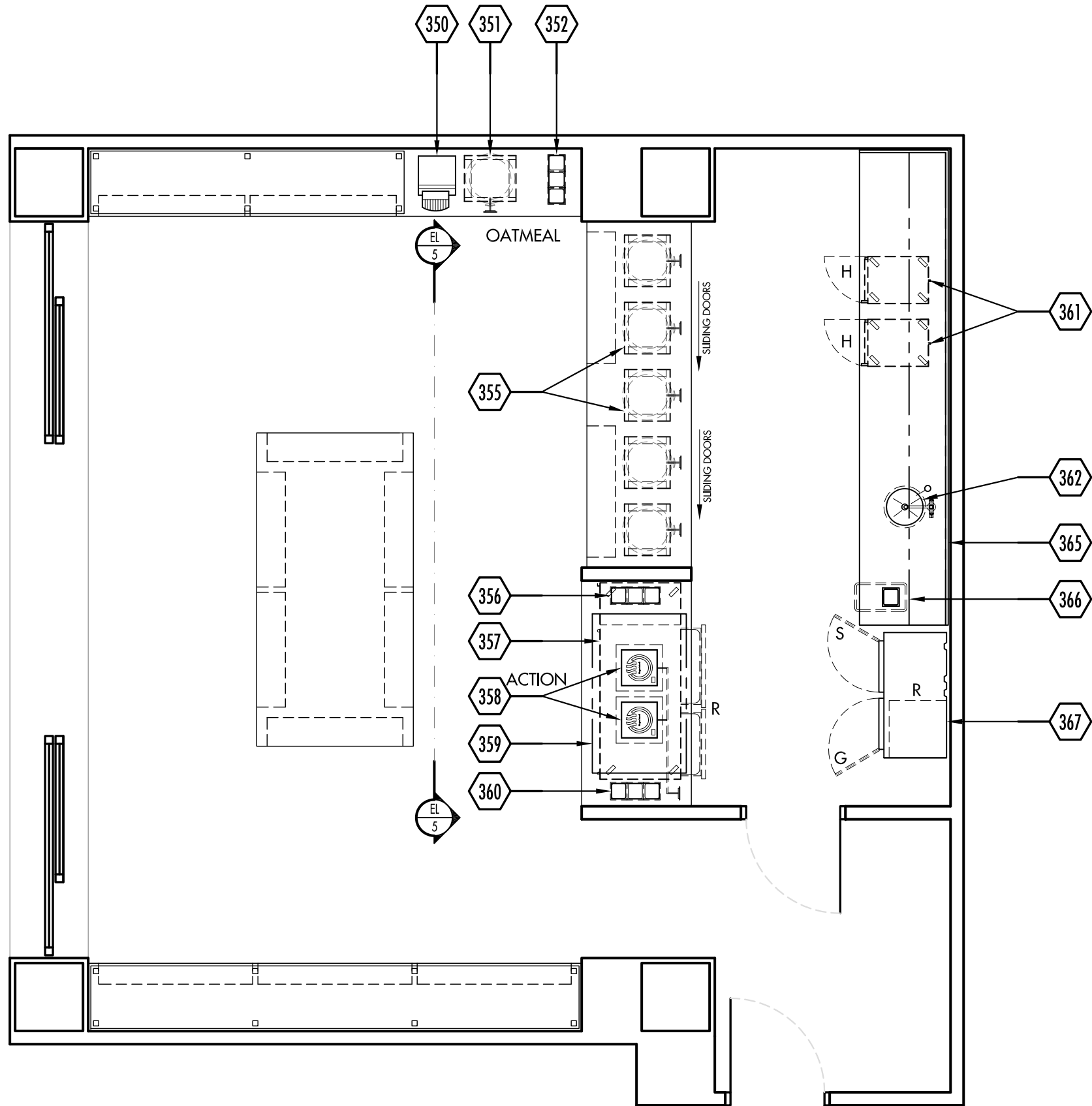
CHECKED : BB

DATE : 03 APRIL 2014

REVISED :

TITLE : FOODSERVICE
EQUIPMENT FLOOR PLAN

FS-2.4



EQUIPMENT FLOOR PLAN

SCALE 1/4" = 1'-0"

COPYRIGHT

UNAUTHORIZED USE OF THE FOODSERVICE DESIGNS, DETAILS, AutoCAD® BLOCKS, AND SPECIFICATIONS CONTAINED IN THESE DOCUMENTS IS STRICTLY PROHIBITED. NSD, INC. MAINTAINS OWNERSHIP OF SAME. THIS PROHIBITION EXTENDS FROM PRINTED MATERIAL TO ANY ELECTRONIC VERSION OF THE SAME. NO USE, OTHER THAN THAT FOR WHICH IT IS INTENDED, IS STRICTLY PROHIBITED WITHOUT WRITTEN PERMISSION FROM NEXT STEP DESIGN, INC. ALL RIGHTS RESERVED.

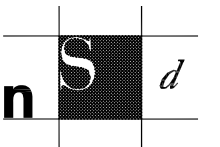
HILTON
HOTELS &
RESORTS

HERB
N' KITCHEN

OWNER:
HILTON WORLDWIDE
7930 JONES BRANCH DRIVE
MCLEAN, VA 22102

GUILD 13

506 2ND AVENUE
SUITE 1021 B
SEATTLE WA 98104
866.838.1684
guild13.com



Next Step Design
FOODSERVICE CONSULTANTS

913 West Street, Suite A
Annapolis, MD 21401

Ph: (410) 263-1200
Fx: (410) 280-1340
www.nextstepdesign.com

DESIGN

DOCUMENTS

PROJECT : D-0496

DRAWN : EM

CHECKED : BB

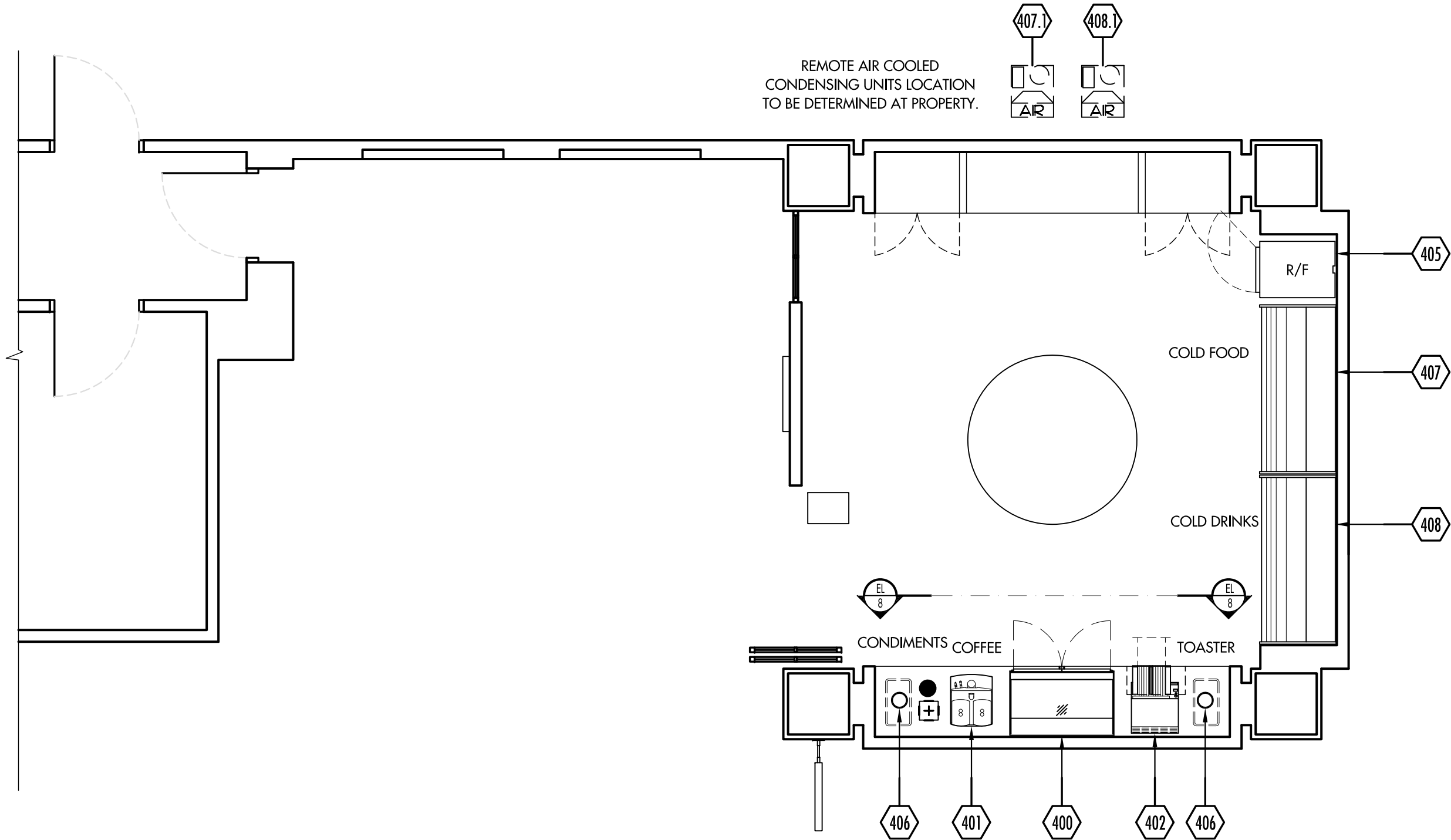
DATE : 03 APRIL 2014

REVISED :

TITLE : FOODSERVICE

EQUIPMENT FLOOR PLAN

FS-3



HERB 'N KITCHEN EXPRESS EQUIPMENT FLOOR PLAN

SCALE 1/4" = 1'-0"

COPYRIGHT

UNAUTHORIZED USE OF THE FOODSERVICE DESIGNS, DETAILS, AutoCAD BLOCKS, AND SPECIFICATIONS CONTAINED IN THESE DOCUMENTS IS STRICTLY PROHIBITED. NSD, INC. MAINTAINS OWNERSHIP OF SAME. THIS PROHIBITION EXTENDS FROM PRINTED MATERIAL TO ANY ELECTRONIC VERSION OF THE SAME. NO USE, OTHER THAN THAT FOR WHICH IT IS INTENDED, IS STRICTLY PROHIBITED WITHOUT WRITTEN PERMISSION FROM NEXT STEP DESIGN, INC. ALL RIGHTS RESERVED.

HILTON
HOTELS &
RESORTS

HERB
N' KITCHEN

OWNER:
HILTON WORLDWIDE
7930 JONES BRANCH DRIVE
MCLEAN, VA 22102

GUILD 13
506 2ND AVENUE
SUITE 1021 B
SEATTLE WA 98104
866.838.1684
guild13.com



Next Step Design
FOODSERVICE CONSULTANTS

913 West Street, Suite A
Annapolis, MD 21401

Ph: (410) 263-1200
Fx: (410) 280-1340
www.nextstepdesign.com

DESIGN
DOCUMENTS

PROJECT : D-0496

DRAWN : EM

CHECKED : BB

DATE : 03 APRIL 2014

REVISED :

TITLE : FOODSERVICE
EQUIPMENT FLOOR PLAN

FS-4

EQUIPMENT SCHEDULE

PR	ITEM	QTY	SOURCE	DESCRIPTION
	1	1	RPI INDUSTRIES	REFRIGERATED GRAB & GO, DROP-IN
	2	1	RPI INDUSTRIES	REFRIGERATED MERCHANDISER, DROP-IN
	3			SPARE NUMBER
	4			SPARE NUMBER
(OWN)	5	2	BY OWNER	POS - CASH REGISTER
(OWN)	6	2	BY OWNER	POS - PRINTER
	7	1	DELFIELD	REFRIGERATOR, UNDERCOUNTER
(VEND)	8	1	CONCORDIA COFFEE	ESPRESSO CAPPUCINO MACHINE
	9	1	FABRICATOR	DROP-IN DUMP SINK
	10	1	FISHER	DIPPERWELL
	11			SPARE NUMBER
	12	1	DELFIELD	REFRIGERATOR, UNDERCOUNTER
	13	1	IMC/TEDDY	FLOOR TROUGH
	14	1	ROBOT COUPE	JUICER, ELECTRIC
(VEND)	15	1	FETCO CORP.	COFFEE BREWER
(VEND)	16	2	FETCO CORP.	ICE TEA BREWER
(OWN)	17	1	HAMILTON BEACH	BLENDER, BAR TYPE
	18	1	LANCER CORP.	ICE BIN, DROP-IN
	19	1	TURBOCHEF	MICROWAVE CONVECTION OVEN
	20	1	FABRICATOR	BEVERAGE COUNTER
	21	1	FABRICATOR	BUILT-IN HAND SINK
(OWN)	21.1	1	BY OWNER	SOAP & TOWEL DISPENSER
	22			SPARE NUMBER
	23			SPARE NUMBER
	24			SPARE NUMBER
	25			SPARE NUMBER
	26			SPARE NUMBER
	27	1	METRO	DRY STORAGE SHELVING (LOT)
	28			SPARE NUMBER
	29			SPARE NUMBER
	30			SPARE NUMBER
	31	1	EQUIPEX	PANINI GRILL
	32	1	DELFIELD	REFRIGERATED COUNTER, WORK TOP
	32.1	1	COLDZONE	REMOTE CONDENSER UNIT
	33			SPARE NUMBER
	34	1	GLASTENDER	HAND SINK W/SOAP & TOWEL DISPENSER
	35	1	DELFIELD	REFRIGERATED COUNTER, LOWBOY
	35.1	1	COLDZONE	REMOTE CONDENSER UNIT

PR	ITEM	QTY	SOURCE	DESCRIPTION
	36	1	FABRICATOR	SNEEZE GUARD
	37	2	JOHN BOOS	CUTTING BOARD
	38			SPARE NUMBER
	39			SPARE NUMBER
	40	1	WOOD STONE CORP.	STONE HEARTH OVEN, GAS
	40.1	1	T&S BRASS	GAS CONNECTOR KIT
	41	1	CAPTIVE-AIRE	EXHAUST HOOD
	41.1	1	ANSUL FIRE	FIRE SUPPRESSION SYSTEM
	42	1	JOHN BOOS	CUTTING BOARD
	43			SPARE NUMBER
	44			SPARE NUMBER
	45	1	DELFIELD	REFRIGERATED COUNTER, LOWBOY
	45.1	1	COLDZONE	REMOTE CONDENSER UNIT
	46	1	HATCO	HEATED SHELF, DROP-IN
	47	2	HATCO	HEAT LAMP, BULB TYPE
	48	3	BON CHEF	SOUP TUREEN
	49			SPARE NUMBER
	50	1	GLASTENDER	HAND SINK W/SOAP & TOWEL DISPENSER
	51	1	DELFIELD	REFRIGERATED COUNTER, SANDWICH TOP
	51.1	1	COLDZONE	REMOTE CONDENSER UNIT
	52	1	SOMERSET INDUSTRIES	PIZZA DOUGH PRESS
	53			SPARE NUMBER
	54			SPARE NUMBER
(OWN)	55	1	BY OWNER	POS - PRINTER
(OWN)	56	1	BY OWNER	POS - CASH REGISTER
	57	1	RPI INDUSTRIES	MERCHANDISER, OPEN
	57.1	1	COLDZONE	REMOTE CONDENSER UNIT
	58	1	RPI INDUSTRIES	MERCHANDISER, OPEN
	58.1	1	COLDZONE	REMOTE CONDENSER UNIT
	59	1	RPI INDUSTRIES	MERCHANDISER, OPEN
	59.1	1	COLDZONE	REMOTE CONDENSER UNIT
	60	1	TRAULSEN	REACH-IN DUAL TEMP CABINET,
(OWN)	200	1	BY OWNER	POS - PRE CHECK REGISTER
(OWN)	201	1	BY OWNER	POS - PRE CHECK PRINTER
	202			SPARE NUMBER
	203			SPARE NUMBER
	204	1	STAR MFG.	CONVEYOR TOASTER
	205	1	COOKTEK	INDUCTION RANGE, UNDERMOUNT

HILTON
HOTELS &
RESORTS

HERB
N' KITCHEN

OWNER:
HILTON WORLDWIDE
7930 JONES BRANCH DRIVE
MCLEAN, VA 22102

GUILD 13
506 2ND AVENUE
SUITE 1021 B
SEATTLE WA 98104
866.838.1684
guild13.com


Next Step Design
FOODSERVICE CONSULTANTS
913 West Street, Suite A
Annapolis, MD 21401
Ph: (410) 263-1200
Fx: (410) 280-1340
www.nextstepdesign.com

DESIGN
DOCUMENTS
PROJECT : D-0496
DRAWN : EM
CHECKED : BB
DATE : 03 APRIL 2014
REVISED :

TITLE : FOODSERVICE
EQUIPMENT SCHEDULE

FS-4.1

EQUIPMENT SCHEDULE

PR	ITEM	QTY	SOURCE	DESCRIPTION
	206	1	FABRICATOR	CONDIMENT BIN
	207	5	COOKTEK	INDUCTION RANGE, UNDERMOUNT
	208	1	FABRICATOR	CONDIMENT BIN
	209	1	DELFIELD	REFRIGERATED COUNTER, LOWBOY
	210	2	COOKTEK	INDUCTION RANGE
	211	1	CAPTIVE-AIRE	RECIRCULATING HOOD
	212	1	FABRICATOR	CONDIMENT BIN
	213			SPARE NUMBER
	214			SPARE NUMBER
	215	2	ALTO-SHAAM	HEATED CABINET, HALF-HEIGHT
	216	1	ELKAY	UNDERMOUNT HAND SINK
	217	1	FABRICATOR	WORK COUNTER
	218	1	FABRICATOR	WALL SHELF
	219	1	TRAULSEN	REFRIGERATOR, REACH-IN
	220	1	GLASTENDER	POS COUNTER/CABINET
(OWN)	221	1	BY OWNER	POS - CASH REGISTER
(OWN)	222	1	BY OWNER	POS - PRINTER
	223	26	GLASTENDER	MODULAR BAR DIE
	224			SPARE NUMBER
	225	1	GLASTENDER	UNDERBAR BOTTLE DISPLAY UNIT
	226	1	GLASTENDER	ICE BIN/COCKTAIL STATION
	227	1	GLASTENDER	SODA GUN HOLDER & TUBING CHASE
(VEND)	227.1	1	BY VENDOR	SODA GUN & CARBONATOR
	228	1	GLASTENDER	DRAINBOARD CABINET
	229	1	GLASTENDER	DRY WASTE UNIT
	230	1	GLASTENDER	HAND SINK W/ SOAP & TOWEL
	231	1	GLASTENDER	UNDERBAR GLASS RACK CABINET
	232	1	MEIKO	GLASS WASHER
	233			SPARE NUMBER
	234			SPARE NUMBER
	235	1	GLASTENDER	UNDERBAR DUMP SINK
	236	1	GLASTENDER	DRY WASTE UNIT
	237	1	GLASTENDER	POS COUNTER/CABINET
(OWN)	238	1	BY OWNER	POS - CASH REGISTER
(OWN)	239	1	BY OWNER	POS - PRINTER
	240	1	GLASTENDER	UNDERBAR BOTTLE DISPLAY UNIT
	241	1	GLASTENDER	ICE BIN/COCKTAIL STATION
	242	1	GLASTENDER	SODA GUN HOLDER & TUBING CHASE
(VEND)	242.1	1	BY VENDOR	SODA GUN & CARBONATOR

PR	ITEM	QTY	SOURCE	DESCRIPTION
	243	1	GLASTENDER	DRAINBOARD CABINET
	244			SPARE NUMBER
	245			SPARE NUMBER
	246	1	GLASTENDER	BACKBAR REFRIGERATOR
	247	1	GLASTENDER	BACKBAR REFRIGERATOR
	248	1	RPI INDUSTRIES	MERCHANDISER, OPEN
	248.1	1	COLDZONE	REMOTE CONDENSER UNIT
	249	1	RPI INDUSTRIES	MERCHANDISER, OPEN
	249.1	1	COLDZONE	REMOTE CONDENSER UNIT
	250	1	RPI INDUSTRIES	MERCHANDISER, OPEN
	250.1	1	COLDZONE	REMOTE CONDENSER UNIT
	251	1	VIKING RANGE	REACH-IN WINE REFRIGERATOR, 1
	252	1	GLASTENDER	HAND SINK W/SOAP & TOWEL DISPENSER
	253			SPARE NUMBER
	254			SPARE NUMBER
(OWN)	255	1	BY OWNER	POS - CASH REGISTER
(OWN)	256	1	BY OWNER	POS - PRINTER
	257	1	FABRICATOR	SNEEZE GUARD
	258	1	HATCO	HEATED SHELF, DROP-IN
	259	2	HATCO	HEAT LAMP, BULB TYPE
	260	1	JOHN BOOS	CUTTING BOARD
	261	1	DELFIELD	REFRIGERATED COUNTER, LOWBOY
	262	1	DELFIELD	REFRIGERATED COUNTER, LOWBOY
	263	2	JOHN BOOS	CUTTING BOARD
	264			SPARE NUMBER
	265			SPARE NUMBER
	266	1	DELFIELD	REFRIGERATED COUNTER, SANDWICH TOP
	266.1	1	COLDZONE	REMOTE CONDENSER UNIT
	267	1	SOMERSET INDUSTRIES	PIZZA DOUGH PRESS
	268	1	WOOD STONE CORP.	STONE HEARTH OVEN, GAS
	268.1	1	T&S BRASS	GAS CONNECTOR KIT
	269	1	CAPTIVE-AIRE	EXHAUST HOOD
	269.1	1	ANSUL FIRE	FIRE SUPPRESSION SYSTEM
	270	1	DELFIELD	REFRIGERATED COUNTER, WORK TOP
	271	1	EQUIPEX	PANINI GRILL
	272			SPARE NUMBER
	273			SPARE NUMBER
	274			SPARE NUMBER

HILTON
HOTELS &
RESORTS

HERB
N' KITCHEN

OWNER:
HILTON WORLDWIDE
7930 JONES BRANCH DRIVE
MCLEAN, VA 22102

GUILD 13
506 2ND AVENUE
SUITE 1021 B
SEATTLE WA 98104
866.838.1684
guild13.com


Next Step Design
FOODSERVICE CONSULTANTS
913 West Street, Suite A
Annapolis, MD 21401
Ph: (410) 263-1200
Fx: (410) 280-1340
www.nextstepdesign.com

DESIGN
DOCUMENTS
PROJECT : D-0496
DRAWN : EM
CHECKED : BB
DATE : 03 APRIL 2014
REVISED :
TITLE : FOODSERVICE
EQUIPMENT SCHEDULE

FS-4.2

EQUIPMENT SCHEDULE

PR	ITEM	QTY	SOURCE	DESCRIPTION
	275	1	THERMALRITE	WALK-IN COOLER
	275.1	1	COLDZONE	EVAPORATOR COIL
	275.2	1	COLDZONE	REMOTE CONDENSER UNIT
	276	1	METRO	WALK-IN SHELVING (LOT)
	277	1	FABRICATOR	WORK COUNTER, REFRIGERATED
	277.1	1	COLDZONE	REMOTE CONDENSER UNIT
	278	1	FABRICATOR	WORK COUNTER, REFRIGERATED
	278.1	1	COLDZONE	REMOTE CONDENSER UNIT
	279	1	FABRICATOR	SNEEZE GUARD
	280	1	GLASTENDER	HAND SINK W/SOAP & TOWEL DISPENSER
	281	1	GLASTENDER	HAND SINK W/SOAP & TOWEL DISPENSER
	282	1	METRO	DRY STORAGE SHELVING (LOT)
	283			SPARE NUMBER
	284			SPARE NUMBER
	285	3	BON CHEF	SOUP TUREEN
(VEND)	286	1	CONCORDIA COFFEE	ESPRESSO CAPPUCINO MACHINE
	287	1	DELFIELD	REFRIGERATOR, UNDERCOUNTER
	288	1	FABRICATOR	DROP-IN DUMP SINK
	289	1	FISHER	DIPPERWELL
(OWN)	290	2	BY OWNER	POS - PRINTER
(OWN)	291	2	BY OWNER	POS - CASH REGISTER
	292			SPARE NUMBER
	293			SPARE NUMBER
	294	1	RPI INDUSTRIES	REFRIGERATED MERCHANDISER, DROP-IN
	294.1	1	COLDZONE	REMOTE CONDENSER UNIT
	295	1	RPI INDUSTRIES	REFRIGERATED GRAB & GO, DROP-IN
	295.1	1	COLDZONE	REMOTE CONDENSER UNIT
	296	1	FABRICATOR	BEVERAGE COUNTER
	297	1	FABRICATOR	BUILT-IN HAND SINK
(OWN)	297.1	1	BY OWNER	SOAP & TOWEL DISPENSER
	298	1	TURBOCHEF	MICROWAVE CONVECTION OVEN
	299	1	LANCER CORP.	ICE BIN, DROP-IN
	300	1	ROBOT COUPE	JUICER, ELECTRIC
(OWN)	301	1	HAMILTON BEACH	BLENDER, BAR TYPE
(VEND)	302	2	FETCO CORP.	ICE TEA BREWER
	303			SPARE NUMBER
	304			SPARE NUMBER
(VEND)	305	1	FETCO CORP.	COFFEE BREWER

PR	ITEM	QTY	SOURCE	DESCRIPTION
	306	1	DELFIELD	REFRIGERATOR, UNDERCOUNTER
	350	1	STAR MFG.	CONVEYOR TOASTER
	351	1	COOKTEK	INDUCTION RANGE, UNDERMOUNT
	352	1	FABRICATOR	CONDIMENT BIN
	353			SPARE NUMBER
	354			SPARE NUMBER
	355	5	COOKTEK	INDUCTION RANGE, UNDERMOUNT
	356	1	FABRICATOR	CONDIMENT BIN
	357	1	DELFIELD	REFRIGERATED COUNTER, LOWBOY
	358	2	COOKTEK	INDUCTION RANGE
	359	1	CAPTIVE-AIRE	RECIRCULATING HOOD
	360	1	FABRICATOR	CONDIMENT BIN
	361	2	ALTO-SHAAM	HEATED CABINET, HALF-HEIGHT
	362	1	ELKAY	UNDERMOUNT HAND SINK
	363			SPARE NUMBER
	364			SPARE NUMBER
	365	1	FABRICATOR	WORK COUNTER
	366	1	FABRICATOR	WALL SHELF
	367	1	TRAULSEN	REFRIGERATOR, REACH-IN
	400	1	RPI INDUSTRIES	HEATED MERCHANDISER
(VEND)	401	1	CONCORDIA COFFEE	ESPRESSO CAPPUCINO MACHINE
	402	2	HATCO	CONVEYOR TOASTER
	403			SPARE NUMBER
	404			SPARE NUMBER
	405	1	TRAULSEN	REACH-IN DUAL TEMP CABINET,
	406	2	FABRICATOR	TRASH CHUTE
	407	1	RPI INDUSTRIES	MERCHANDISER, OPEN
	407.1	1	COLDZONE	REMOTE CONDENSER UNIT
	408	1	RPI INDUSTRIES	MERCHANDISER, OPEN
	408.1	1	COLDZONE	REMOTE CONDENSER UNIT

HILTON
HOTELS &
RESORTS

HERB
N' KITCHEN

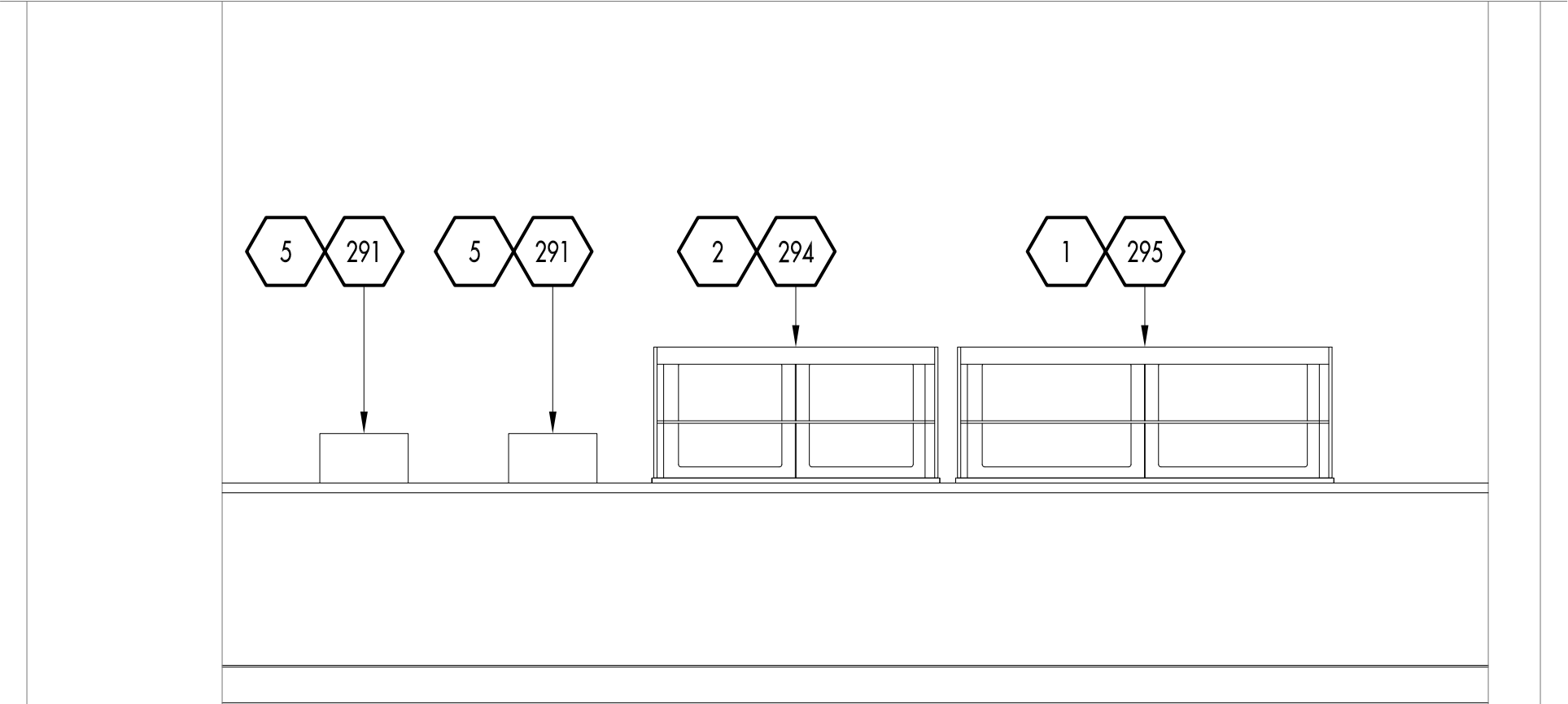
OWNER:
HILTON WORLDWIDE
7930 JONES BRANCH DRIVE
MCLEAN, VA 22102

GUILD 13
506 2ND AVENUE
SUITE 1021 B
SEATTLE WA 98104
866.838.1684
guild13.com



DESIGN
DOCUMENTS
PROJECT : D-0496
DRAWN : EM
CHECKED : BB
DATE : 03 APRIL 2014
REVISED :
TITLE : FOODSERVICE
EQUIPMENT SCHEDULE

FS-4.3



ELEVATION EL 1
SCALE: 1/2"=1'-0"

EQUIPMENT ELEVATION VIEWS

SCALE 1/2" = 1'-0"

COPYRIGHT
UNAUTHORIZED USE OF THE FOODSERVICE DESIGNS, DETAILS, AutoCAD®BLOCKS, AND SPECIFICATIONS CONTAINED IN THESE DOCUMENTS IS STRICTLY PROHIBITED. NSD, INC. MAINTAINS OWNERSHIP OF SAME. THIS PROHIBITION EXTENDS FROM PRINTED MATERIAL TO ANY ELECTRONIC VERSION OF THE SAME. NO USE, OTHER THAN THAT FOR WHICH IT IS INTENDED, IS STRICTLY PROHIBITED WITHOUT WRITTEN PERMISSION FROM NEXT STEP DESIGN,INC. ALL RIGHTS RESERVED.

HILTON
HOTELS &
RESORTS

HERB
N' KITCHEN

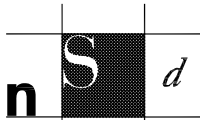
OWNER:
HILTON WORLDWIDE
7930 JONES BRANCH DRIVE
MCLEAN, VA 22102

GUILD 13
506 2ND AVENUE
SUITE 1021 B
SEATTLE WA 98104
866.838.1684
guild13.com

n S d
Next Step Design
FOODSERVICE CONSULTANTS
913 West Street, Suite A
Annapolis, MD 21401
Ph: (410) 263-1200
Fx: (410) 280-1340
www.nextstepdesign.com

DESIGN	
DOCUMENTS	
PROJECT	: D-0496
DRAWN	: EM
CHECKED	: BB
DATE	: 03 APRIL 2014
REVISED	:
TITLE	: FOODSERVICE
	: EQUIPMENT FLOOR PLAN

FS-EL1



Next Step Design
FOODSERVICE CONSULTANTS
913 West Street, Suite A
Annapolis, MD 21401

Ph: (410) 263-1200
Fx: (410) 280-1340
www.nextstepdesign.com

DESIGN

DOCUMENTS

PROJECT : D-0496

DRAWN : EM

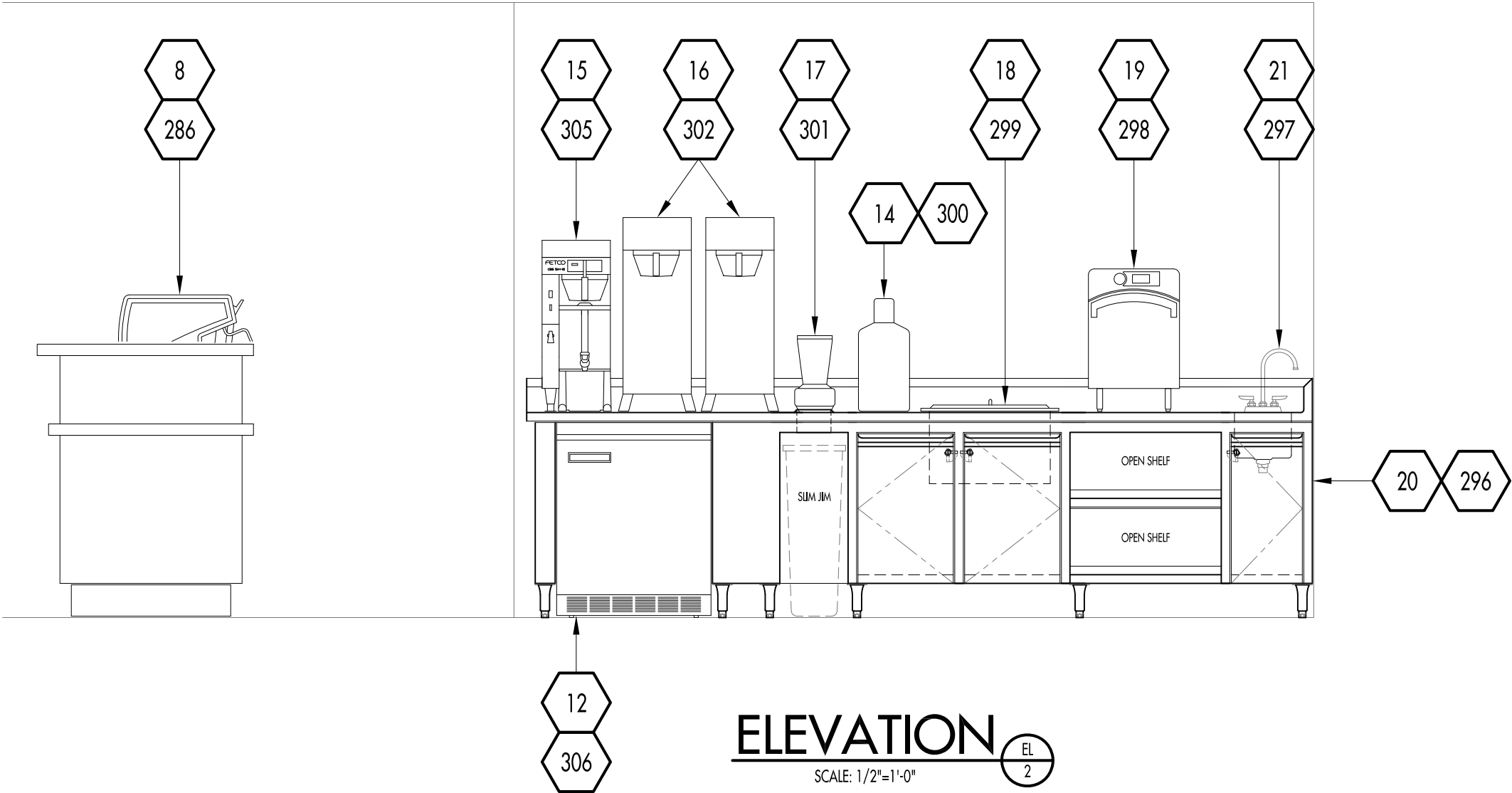
CHECKED : BB

DATE : 03 APRIL 2014

REVISED :

TITLE : FOODSERVICE

EQUIPMENT FLOOR PLAN

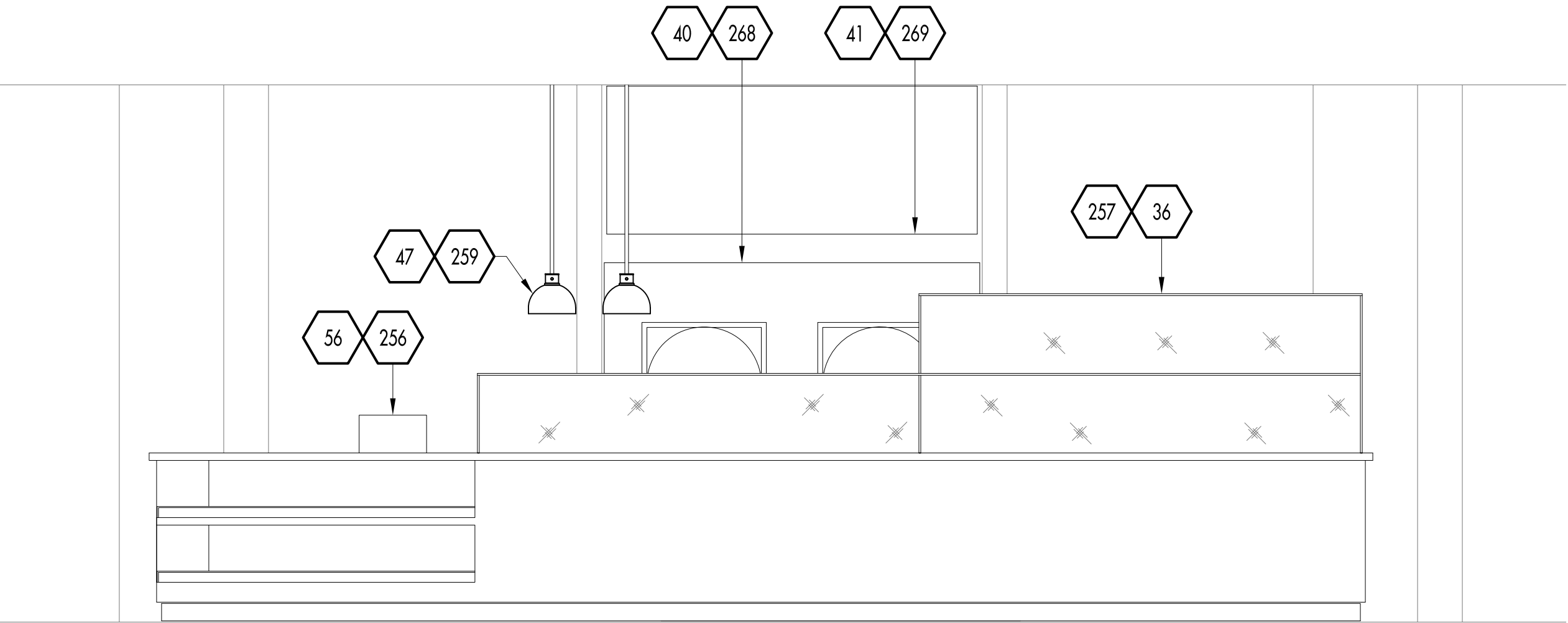


EQUIPMENT ELEVATION VIEWS

SCALE 1/2" = 1'-0"

COPYRIGHT

UNAUTHORIZED USE OF THE FOODSERVICE DESIGNS, DETAILS, AutoCAD BLOCKS, AND SPECIFICATIONS CONTAINED IN THESE DOCUMENTS IS STRICTLY PROHIBITED. NSD, INC. MAINTAINS OWNERSHIP OF SAME. THIS PROHIBITION EXTENDS FROM PRINTED MATERIAL TO ANY ELECTRONIC VERSION OF THE SAME. NO USE, OTHER THAN THAT FOR WHICH IT IS INTENDED, IS STRICTLY PROHIBITED WITHOUT WRITTEN PERMISSION FROM NEXT STEP DESIGN, INC. ALL RIGHTS RESERVED.



ELEVATION EL 3
SCALE: 1/2"=1'-0"

EQUIPMENT ELEVATION VIEWS

SCALE 1/2" = 1'-0"

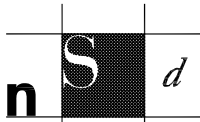
COPYRIGHT
UNAUTHORIZED USE OF THE FOODSERVICE DESIGNS, DETAILS, AutoCAD BLOCKS, AND SPECIFICATIONS CONTAINED IN THESE DOCUMENTS IS STRICTLY PROHIBITED. NSD, INC. MAINTAINS OWNERSHIP OF SAME. THIS PROHIBITION EXTENDS FROM PRINTED MATERIAL TO ANY ELECTRONIC VERSION OF THE SAME. NO USE, OTHER THAN THAT FOR WHICH IT IS INTENDED, IS STRICTLY PROHIBITED WITHOUT WRITTEN PERMISSION FROM NEXT STEP DESIGN, INC. ALL RIGHTS RESERVED.

HILTON
HOTELS &
RESORTS

HERB
N' KITCHEN

OWNER:
HILTON WORLDWIDE
7930 JONES BRANCH DRIVE
MCLEAN, VA 22102

GUILD 13
506 2ND AVENUE
SUITE 1021 B
SEATTLE WA 98104
866.838.1684
guild13.com

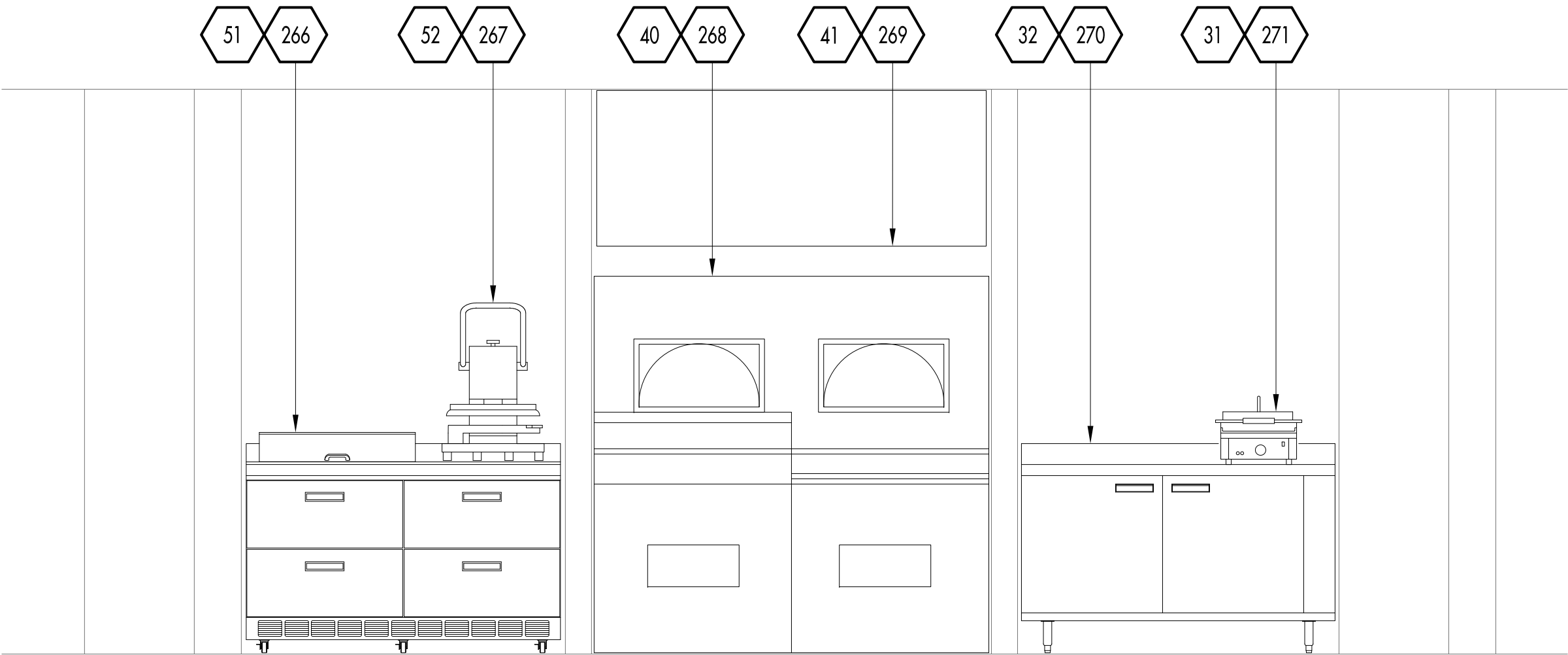


Next Step Design
FOODSERVICE CONSULTANTS
913 West Street, Suite A
Annapolis, MD 21401

Ph: (410) 263-1200
Fx: (410) 280-1340
www.nextstepdesign.com

DESIGN	
DOCUMENTS	
PROJECT	: D-0496
DRAWN	: EM
CHECKED	: BB
DATE	: 03 APRIL 2014
REVISED	:
TITLE	: FOODSERVICE
	: EQUIPMENT FLOOR PLAN

FS-EL3



ELEVATION EL 4
SCALE: 1/2"=1'-0"

EQUIPMENT ELEVATION VIEWS

SCALE 1/2" = 1'-0"

COPYRIGHT
UNAUTHORIZED USE OF THE FOODSERVICE DESIGNS, DETAILS, AutoCAD BLOCKS, AND SPECIFICATIONS CONTAINED IN THESE DOCUMENTS IS STRICTLY PROHIBITED. NSD, INC. MAINTAINS OWNERSHIP OF SAME. THIS PROHIBITION EXTENDS FROM PRINTED MATERIAL TO ANY ELECTRONIC VERSION OF THE SAME. NO USE, OTHER THAN THAT FOR WHICH IT IS INTENDED, IS STRICTLY PROHIBITED WITHOUT WRITTEN PERMISSION FROM NEXT STEP DESIGN, INC. ALL RIGHTS RESERVED.

HILTON
HOTELS &
RESORTS

HERB
N' KITCHEN

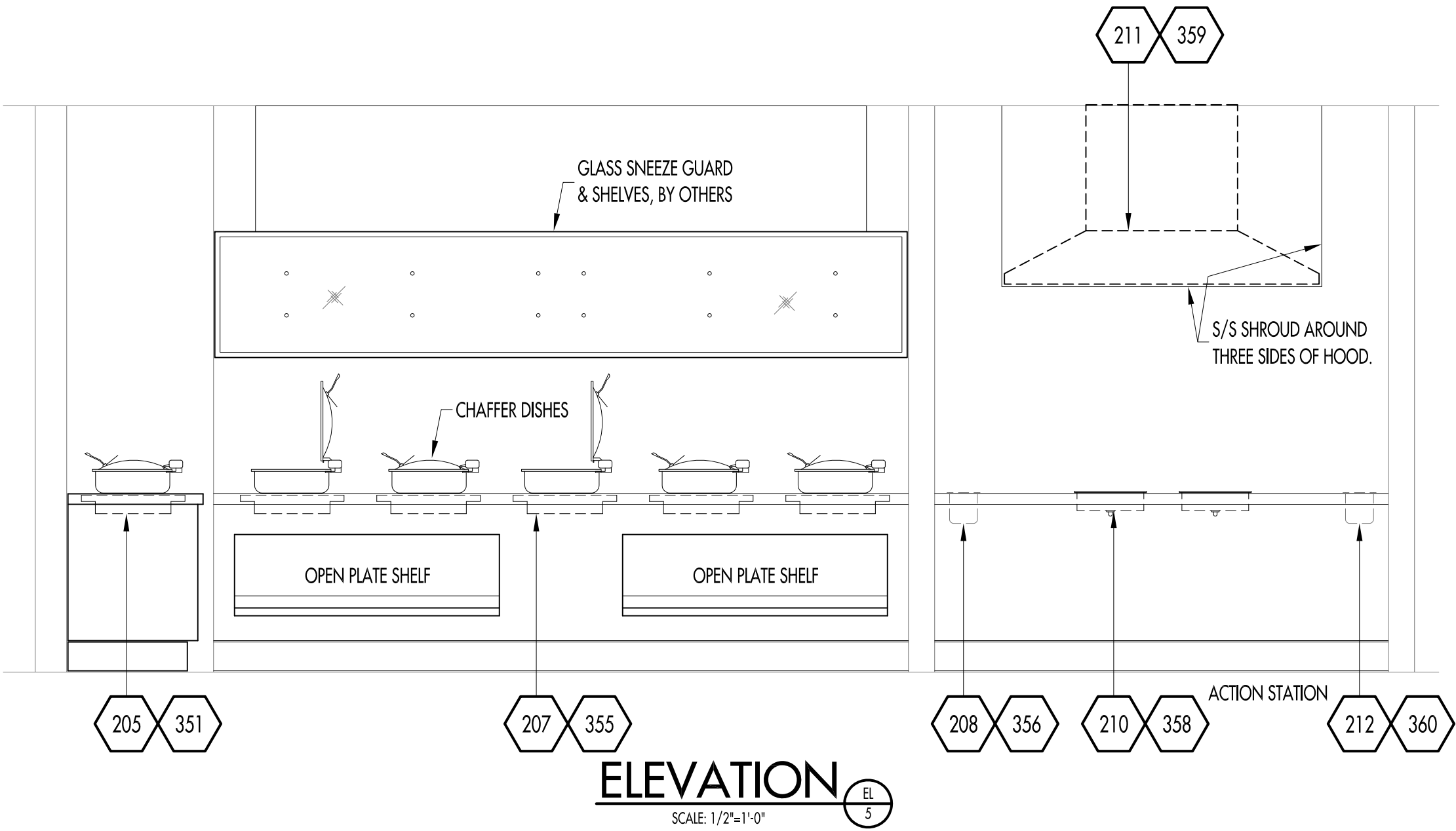
OWNER:
HILTON WORLDWIDE
7930 JONES BRANCH DRIVE
MCLEAN, VA 22102

GUILD 13
506 2ND AVENUE
SUITE 1021 B
SEATTLE WA 98104
866.838.1684
guild13.com

nsd
Next Step Design
FOODSERVICE CONSULTANTS
913 West Street, Suite A
Annapolis, MD 21401
Ph: (410) 263-1200
Fx: (410) 280-1340
www.nextstepdesign.com

DESIGN	
DOCUMENTS	
PROJECT	: D-0496
DRAWN	: EM
CHECKED	: BB
DATE	: 03 APRIL 2014
REVISED	:
TITLE	: FOODSERVICE
	: EQUIPMENT FLOOR PLAN

FS-EL4



EQUIPMENT ELEVATION VIEWS

SCALE 1/2" = 1'-0"

COPYRIGHT
UNAUTHORIZED USE OF THE FOODSERVICE DESIGNS, DETAILS, AutoCAD BLOCKS, AND SPECIFICATIONS CONTAINED IN THESE DOCUMENTS IS STRICTLY PROHIBITED. NSD, INC. MAINTAINS OWNERSHIP OF SAME. THIS PROHIBITION EXTENDS FROM PRINTED MATERIAL TO ANY ELECTRONIC VERSION OF THE SAME. NO USE, OTHER THAN THAT FOR WHICH IT IS INTENDED, IS STRICTLY PROHIBITED WITHOUT WRITTEN PERMISSION FROM NEXT STEP DESIGN, INC. ALL RIGHTS RESERVED.

HILTON
HOTELS &
RESORTS

HERB
N' KITCHEN

OWNER:
HILTON WORLDWIDE
7930 JONES BRANCH DRIVE
MCLEAN, VA 22102

GUILD 13
506 2ND AVENUE
SUITE 1021 B
SEATTLE WA 98104
866.838.1684
guild13.com

nsd
Next Step Design
FOODSERVICE CONSULTANTS
913 West Street, Suite A
Annapolis, MD 21401
Ph: (410) 263-1200
Fx: (410) 280-1340
www.nextstepdesign.com

DESIGN	
DOCUMENTS	
PROJECT	: D-0496
DRAWN	: EM
CHECKED	: BB
DATE	: 03 APRIL 2014
REVISED	:
TITLE	: FOODSERVICE
	: EQUIPMENT FLOOR PLAN

FS-EL5

HILTON
HOTELS &
RESORTS

HERB
N' KITCHEN

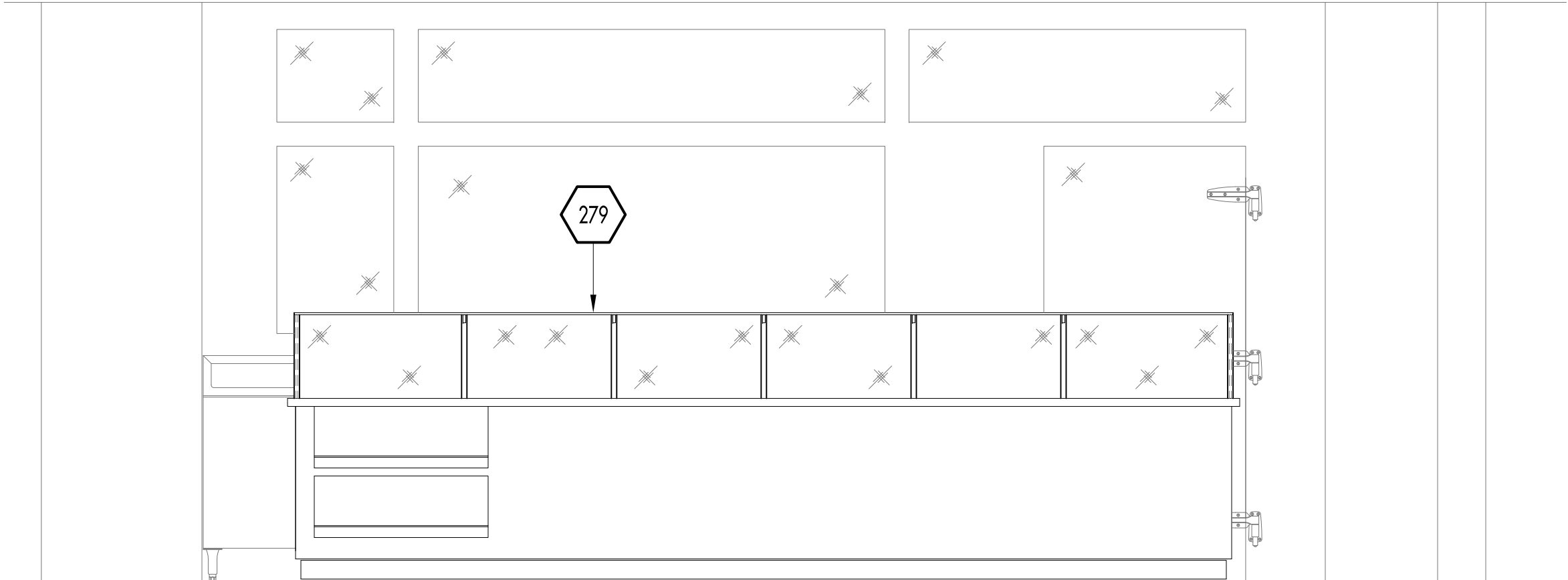
OWNER:
HILTON WORLDWIDE
7930 JONES BRANCH DRIVE
MCLEAN, VA 22102

GUILD 13
506 2ND AVENUE
SUITE 1021 B
SEATTLE WA 98104
866.838.1684
guild13.com


Next Step Design
FOODSERVICE CONSULTANTS
913 West Street, Suite A
Annapolis, MD 21401
Ph: (410) 263-1200
Fx: (410) 280-1340
www.nextstepdesign.com

DESIGN	
DOCUMENTS	
PROJECT	: D-0496
DRAWN	: EM
CHECKED	: BB
DATE	: 03 APRIL 2014
REVISED	:
TITLE	: FOODSERVICE
	EQUIPMENT FLOOR PLAN

FS-EL6

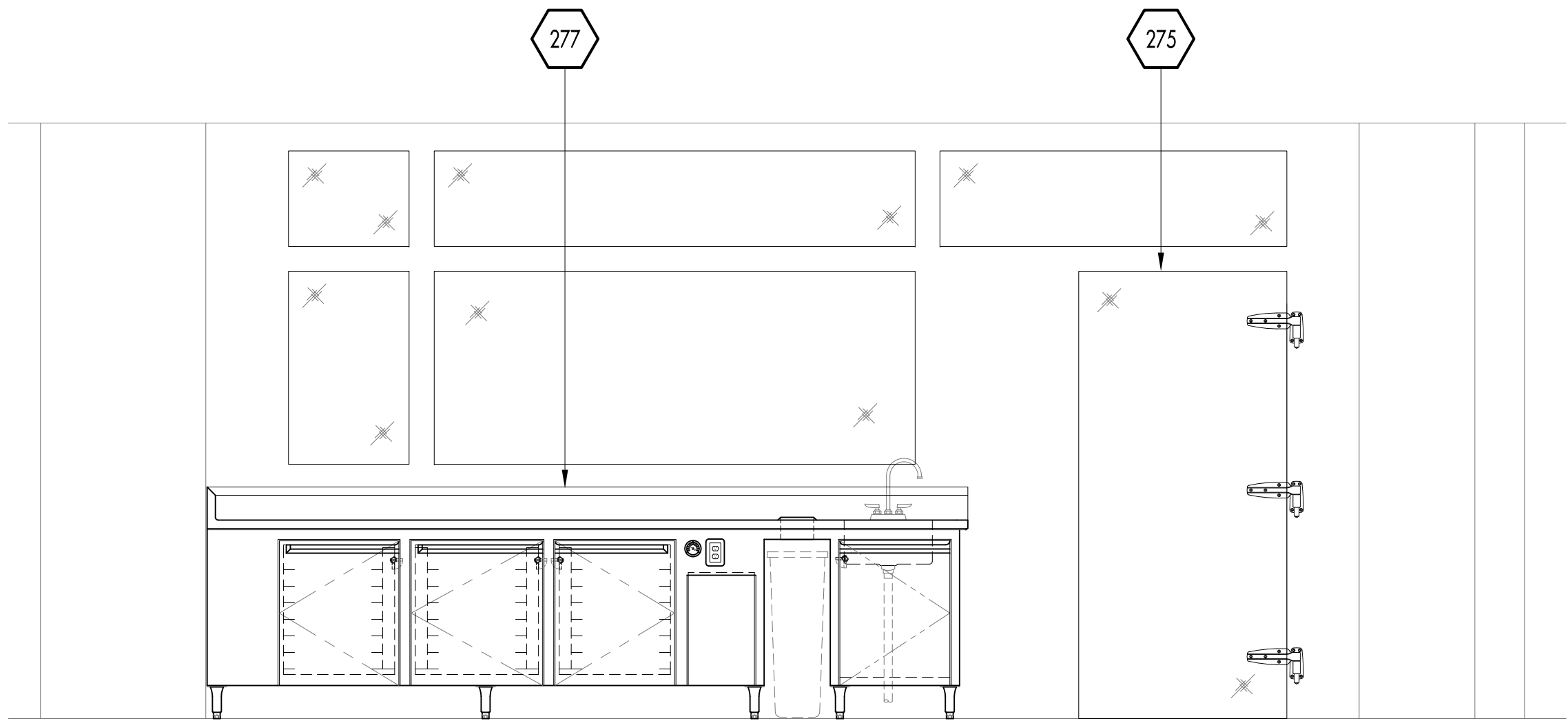


ELEVATION EL 6
SCALE: 1/2"=1'-0"

EQUIPMENT ELEVATION VIEWS

SCALE 1/2" = 1'-0"

COPYRIGHT
UNAUTHORIZED USE OF THE FOODSERVICE DESIGNS, DETAILS, AutoCAD BLOCKS, AND SPECIFICATIONS CONTAINED IN THESE DOCUMENTS IS STRICTLY PROHIBITED. NSD, INC. MAINTAINS OWNERSHIP OF SAME. THIS PROHIBITION EXTENDS FROM PRINTED MATERIAL TO ANY ELECTRONIC VERSION OF THE SAME. NO USE, OTHER THAN THAT FOR WHICH IT IS INTENDED, IS STRICTLY PROHIBITED WITHOUT WRITTEN PERMISSION FROM NEXT STEP DESIGN, INC. ALL RIGHTS RESERVED.



ELEVATION EL 7
SCALE: 1/2"=1'-0"

EQUIPMENT ELEVATION VIEWS

SCALE 1/2" = 1'-0"

COPYRIGHT

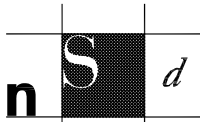
UNAUTHORIZED USE OF THE FOODSERVICE DESIGNS, DETAILS, AutoCAD BLOCKS, AND SPECIFICATIONS CONTAINED IN THESE DOCUMENTS IS STRICTLY PROHIBITED. NSD, INC. MAINTAINS OWNERSHIP OF SAME. THIS PROHIBITION EXTENDS FROM PRINTED MATERIAL TO ANY ELECTRONIC VERSION OF THE SAME. NO USE, OTHER THAN THAT FOR WHICH IT IS INTENDED, IS STRICTLY PROHIBITED WITHOUT WRITTEN PERMISSION FROM NEXT STEP DESIGN, INC. ALL RIGHTS RESERVED.

HILTON
HOTELS &
RESORTS

HERB
N' KITCHEN

OWNER:
HILTON WORLDWIDE
7930 JONES BRANCH DRIVE
MCLEAN, VA 22102

GUILD 13
506 2ND AVENUE
SUITE 1021 B
SEATTLE WA 98104
866.838.1684
guild13.com



Next Step Design
FOODSERVICE CONSULTANTS
913 West Street, Suite A
Annapolis, MD 21401

Ph: (410) 263-1200
Fx: (410) 280-1340
www.nextstepdesign.com

DESIGN

DOCUMENTS

PROJECT : D-0496

DRAWN : EM

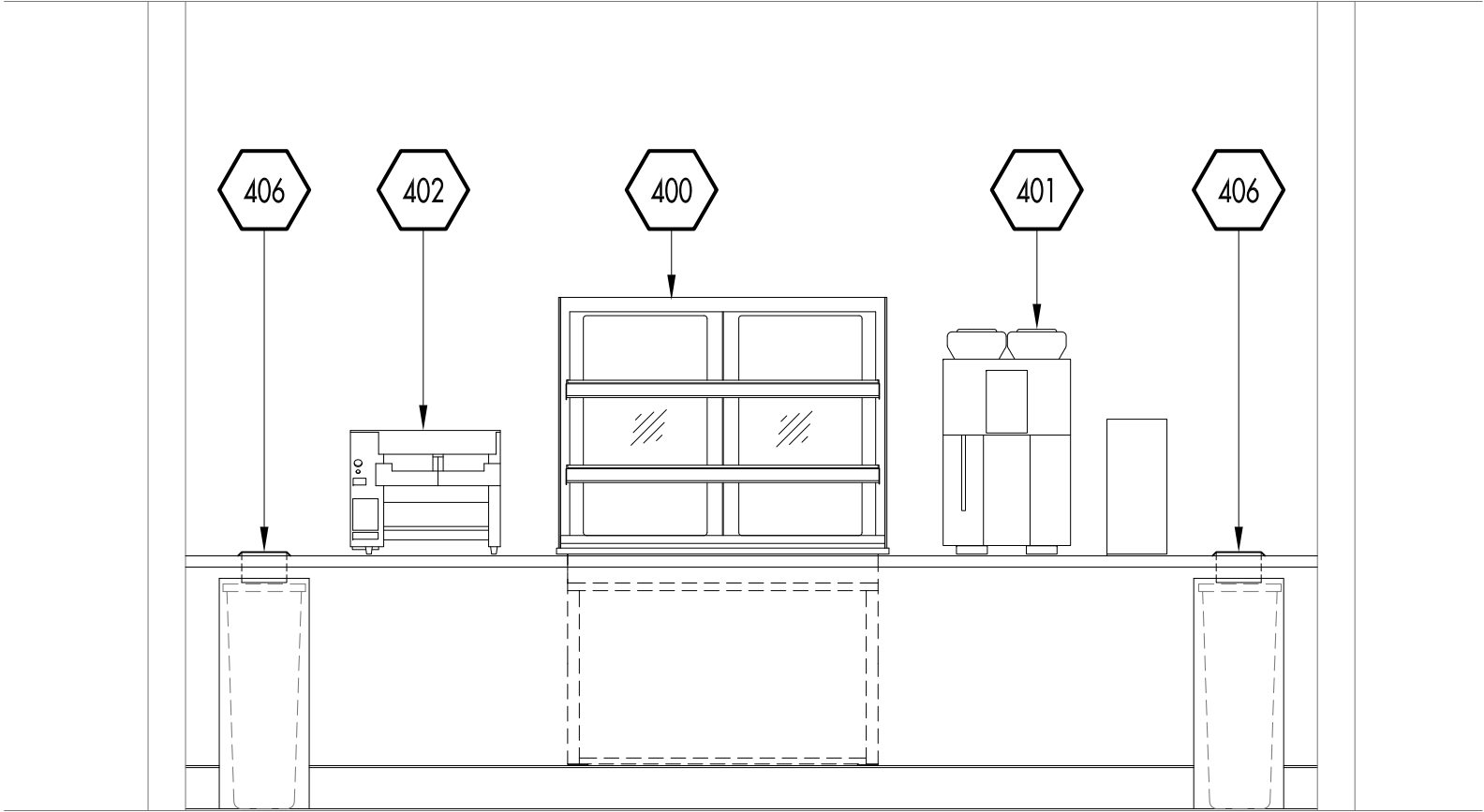
CHECKED : BB

DATE : 03 APRIL 2014

REVISED :

TITLE : FOODSERVICE
EQUIPMENT FLOOR PLAN

FS-EL7



ELEVATION EL 8
SCALE: 1/2"=1'-0"

EQUIPMENT ELEVATION VIEWS

SCALE 1/2" = 1'-0"

COPYRIGHT
UNAUTHORIZED USE OF THE FOODSERVICE DESIGNS, DETAILS, AutoCAD®BLOCKS, AND SPECIFICATIONS CONTAINED IN THESE DOCUMENTS IS STRICTLY PROHIBITED. NSD, INC. MAINTAINS OWNERSHIP OF SAME. THIS PROHIBITION EXTENDS FROM PRINTED MATERIAL TO ANY ELECTRONIC VERSION OF THE SAME. NO USE, OTHER THAN THAT FOR WHICH IT IS INTENDED, IS STRICTLY PROHIBITED WITHOUT WRITTEN PERMISSION FROM NEXT STEP DESIGN, INC. ALL RIGHTS RESERVED.

HILTON
HOTELS &
RESORTS

HERB
N' KITCHEN

OWNER:
HILTON WORLDWIDE
7930 JONES BRANCH DRIVE
MCLEAN, VA 22102

GUILD 13
506 2ND AVENUE
SUITE 1021 B
SEATTLE WA 98104
866.838.1684
guild13.com

n S d
Next Step Design
FOODSERVICE CONSULTANTS
913 West Street, Suite A
Annapolis, MD 21401
Ph: (410) 263-1200
Fx: (410) 280-1340
www.nextstepdesign.com

DESIGN	
DOCUMENTS	
PROJECT	: D-0496
DRAWN	: EM
CHECKED	: BB
DATE	: 03 APRIL 2014
REVISED	:
TITLE	: FOODSERVICE
	: EQUIPMENT FLOOR PLAN

FS-EL8