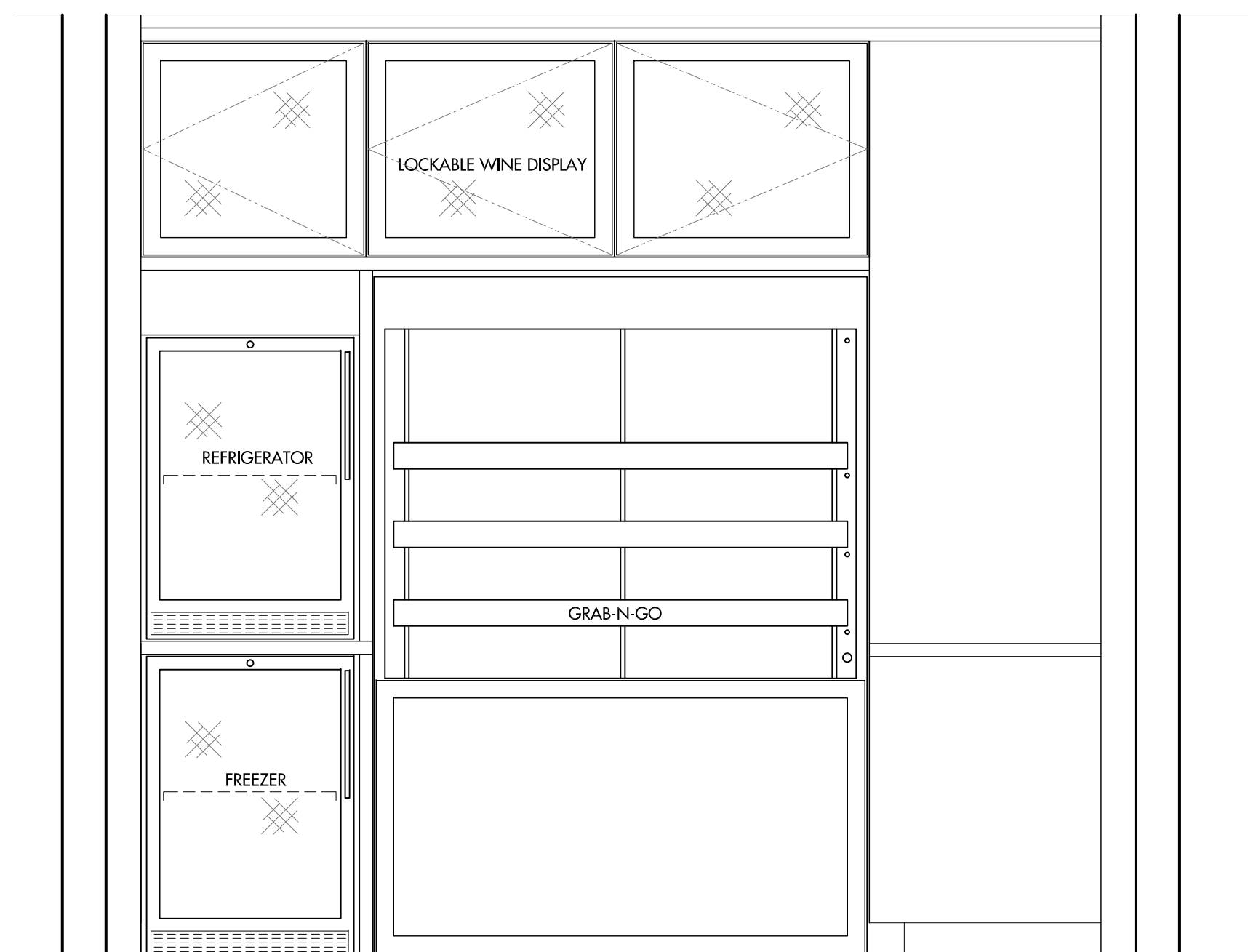
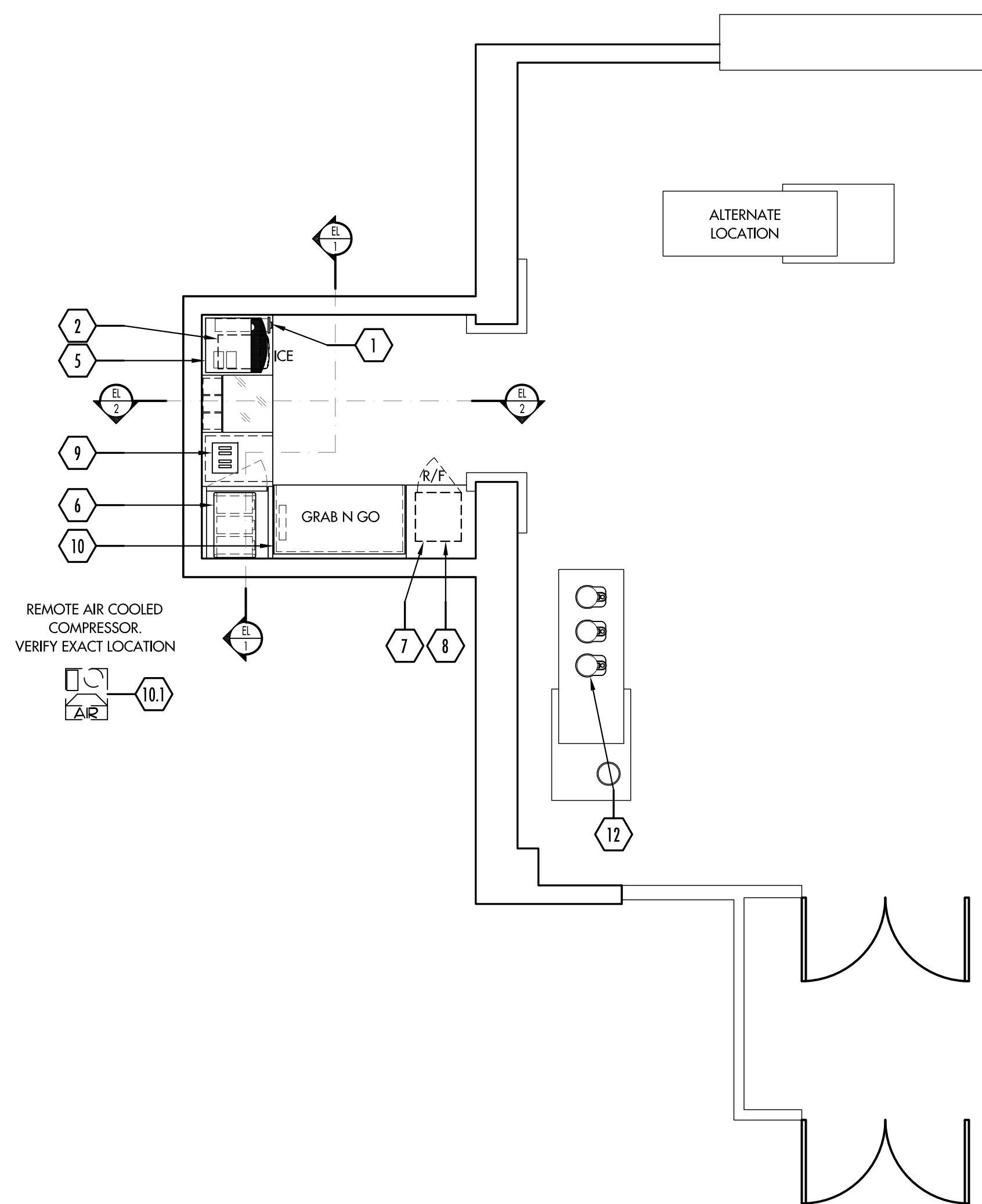


# EQUIPMENT SCHEDULE

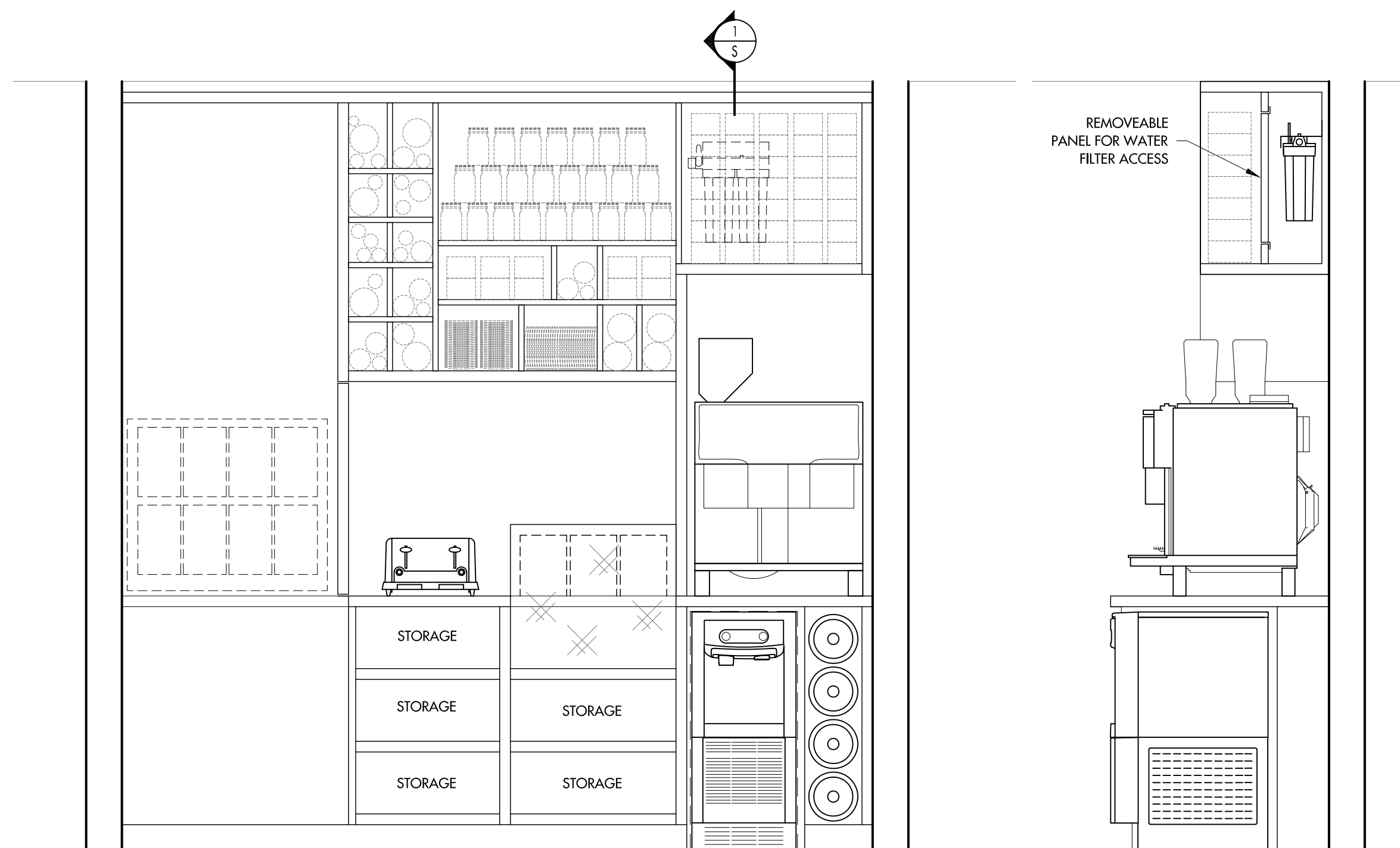
PR	ITEM	QTY	SOURCE	DESCRIPTION
	1	4	SAN JAMAR	DISPOSABLE CUP DISPENSER
	2	1	FOLLETT	ICE MACHINE & DISPENSER, NUGGET STYLE
	3			SPARE NUMBER
	4			SPARE NUMBER
	5	1	CONCORDIA COFFEE	ESPRESSO CAPPUCCINO MACHINE
	6	1	CONCORDIA COFFEE	SYRUP BAG-N-BOX
	7	1	SUMMIT COMMERCIAL	REFRIGERATOR, MERCHANDISER
	8	1	SUMMIT COMMERCIAL	FREEZER, UNDERCOUNTER, REACH-IN
	9	1	STAR MFG.	POP-UP TOASTER
	10	1	RPI INDUSTRIES	OPEN MERCHANDISER
	10.1	1	COPELAND	CONDENSING UNIT
	11			SPARE NUMBER
	12	3	FETCO	COFFEE DISPENSER

\*\*\*PROCUREMENT LEGEND\*\*\*

CODE	DESCRIPTION
(E)	EXISTING EQUIPMENT AS SHOWN.
(E/M)	EQUIPMENT TO BE MODIFIED BY KEC.
(E/M/R)	EXISTING EQUIPMENT, MODIFIED BY KEC/RELOCATED.
(E/R)	EXISTING EQUIPMENT TO BE RELOCATED.
(E/S/R)	EXISTING EQUIPMENT IN STORAGE (REINSTALL).
(FUT)	EQUIPMENT TO BE INSTALLED AT A FUTURE DATE.
(GC)	EQUIPMENT PROVIDED BY GENERAL CONTRACTOR.
(NIKEC)	NOT IN KITCHEN EQUIPMENT CONTRACT.
(OTHER)	EQUIPMENT PROVIDED BY OTHERS.
(OWN)	EQUIPMENT PROVIDED BY OWNER.
(SMWRS)	SEPARATE SMALL WARES BID.
(VEND)	EQUIPMENT PROVIDED BY VENDOR/SUPPLIER.



ELEVATION 2  
SCALE: 3/4"=1'-0"



ELEVATION 1  
SCALE: 3/4"=1'-0"

SECTION 1  
SCALE: 3/4"=1'-0"

## MARKET TIER 2 EQUIPMENT FLOOR PLAN

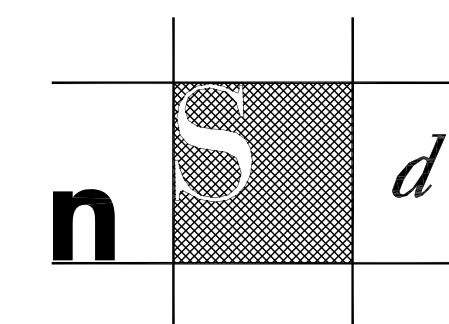
SCALE 1/4" = 1'-0"

**COPYRIGHT**  
UNAUTHORIZED USE OF THE FOODSERVICE DESIGNS, DETAILS, AutoCAD® BLOCKS, AND SPECIFICATIONS CONTAINED IN THESE DOCUMENTS IS STRICTLY PROHIBITED. NSD, INC. MAINTAINS OWNERSHIP OF SAME. THIS PROHIBITION EXTENDS FROM PRINTED MATERIAL TO ANY ELECTRONIC VERSION OF THE SAME. NO USE, OTHER THAN THAT FOR WHICH IT IS INTENDED, IS STRICTLY PROHIBITED WITHOUT WRITTEN PERMISSION FROM NEXT STEP DESIGN, INC. ALL RIGHTS RESERVED.



MADE Market

TIER 2



Next Step Design  
FOODSERVICE CONSULTANTS

913 West Street, Suite A  
Annapolis, MD 21401

Ph: (410) 263-1200  
Fx: (410) 280-1340  
www.nextstepdesign.com

DATE: ~ AS NOTED

PROJECT #: D-9175  
DRAWN: JRLS

FOODSERVICE TIER 2  
EQUIPMENT FLOOR PLAN

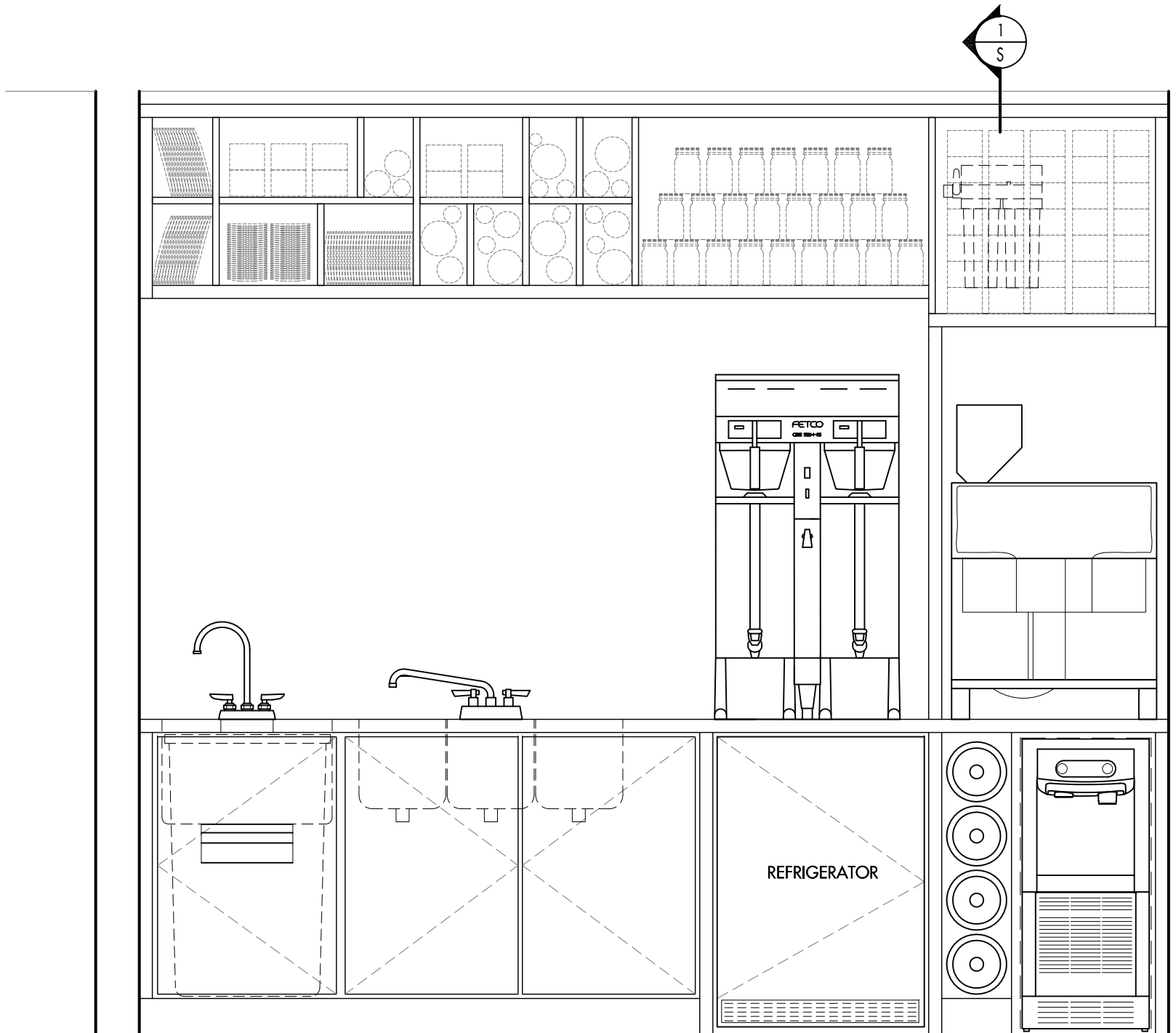
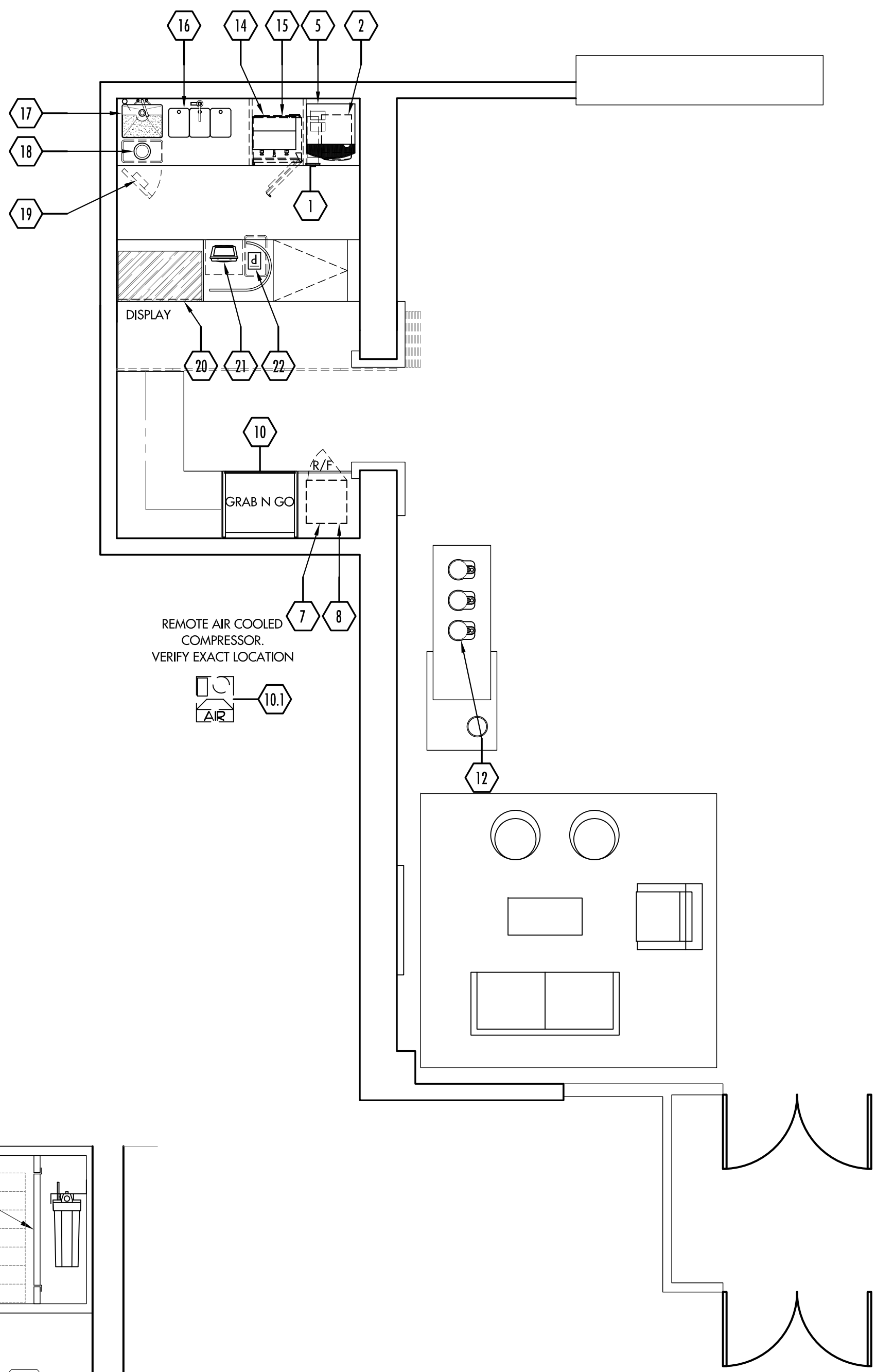
SHEET #:  
**FS-T2-1SE**

# EQUIPMENT SCHEDULE

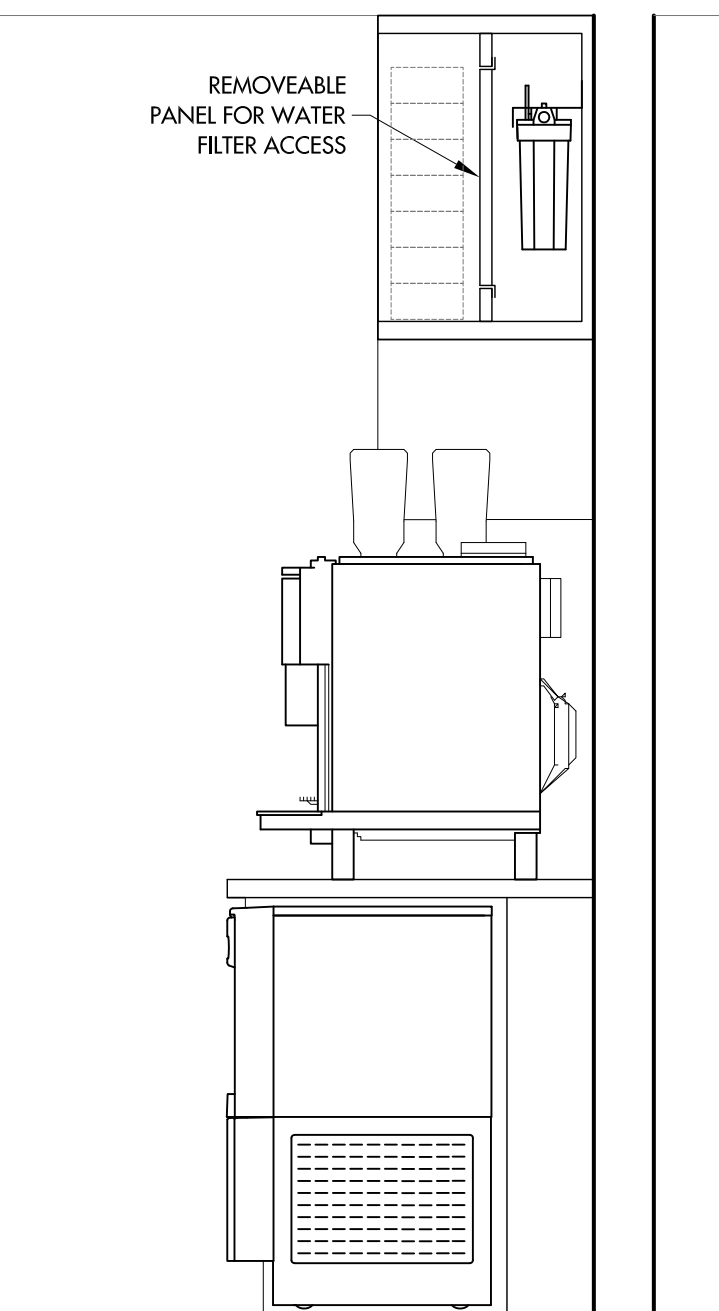
PR	ITEM	QTY	SOURCE	DESCRIPTION
	1	4	SAN JAMAR	DISPOSABLE CUP DISPENSER
	2	1	FOLLETT	ICE MACHINE & DISPENSER, NUGGET STYLE
	3			SPARE NUMBER
	4			SPARE NUMBER
	5	1	CONCORDIA COFFEE	ESPRESSO CAPPUCCINO MACHINE
	6			SPARE NUMBER
	7	1	SUMMIT COMMERCIAL	REFRIGERATOR, MERCHANDISER
	8	1	SUMMIT COMMERCIAL	FREEZER, UNDERCOUNTER, REACH-IN
	9			SPARE NUMBER
	10	1	RPI INDUSTRIES	OPEN MERCHANDISER
	10.1	1	COPELAND	CONDENSING UNIT
	11			SPARE NUMBER
	12	3	FETCO	COFFEE DISPENSER
	13			SPARE NUMBER
	14	1	SUMMIT COMMERCIAL	REACH-IN UNDERCOUNTER REFRIGERATOR
(VEND)	15	1	FETCO	COFFEE BREWER
	16	1	FABRICATOR	THREE COMPARTMENT SINK
	17	1	FABRICATOR	DUMP SINK
	17.1	1	FMP	SOAP DISPENSER
	18	1	FABRICATOR	TRASH CHUTE
	19	1	FABRICATOR	PAPER TOWEL DISPENSER
	20	1	RPI INDUSTRIES	DISPLAY CASE
(OWN)	21	1	BY OWNER	POS - CASH REGISTER
(OWN)	22	1	BY OWNER	POS - PRINTER

\*\*\*PROCUREMENT LEGEND\*\*\*

CODE	DESCRIPTION
(E)	EXISTING EQUIPMENT AS SHOWN.
(E/M)	EQUIPMENT TO BE MODIFIED BY KEC.
(E/M/R)	EXISTING EQUIPMENT, MODIFIED BY KEC/RELOCATED.
(E/R)	EXISTING EQUIPMENT TO BE RELOCATED.
(E/S/R)	EXISTING EQUIPMENT IN STORAGE (REINSTALL).
(FUT)	EQUIPMENT TO BE INSTALLED AT A FUTURE DATE.
(GC)	EQUIPMENT PROVIDED BY GENERAL CONTRACTOR.
(NIKEC)	NOT IN KITCHEN EQUIPMENT CONTRACT.
(OTHER)	EQUIPMENT PROVIDED BY OTHERS.
(OWN)	EQUIPMENT PROVIDED BY OWNER.
(SMWRS)	SEPARATE SMALL WARES BID.
(VEND)	EQUIPMENT PROVIDED BY VENDOR/SUPPLIER.



ELEVATION  
SCALE: 3/4" = 1'-0"



SECTION  
SCALE: 3/4" = 1'-0"

## MARKET TIER 2 EQUIPMENT FLOOR PLAN (WITH ADDITIONAL OPTIONS)

SCALE 1/4" = 1'-0"

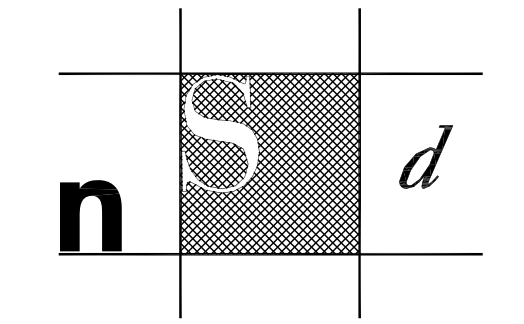
**COPYRIGHT**  
UNAUTHORIZED USE OF THE FOODSERVICE DESIGNS, DETAILS, AutoCAD® BLOCKS, AND SPECIFICATIONS CONTAINED IN THESE DOCUMENTS IS STRICTLY PROHIBITED. NSD, INC., MAINTAINS OWNERSHIP OF SAME. THIS PROHIBITION EXTENDS FROM PRINTED MATERIAL TO ANY ELECTRONIC VERSION OF THE SAME. NO USE, OTHER THAN THAT FOR WHICH IT IS INTENDED, IS STRICTLY PROHIBITED WITHOUT WRITTEN PERMISSION FROM NEXT STEP DESIGN, INC. ALL RIGHTS RESERVED.

SUBMITTAL \_\_\_\_\_ DATE \_\_\_\_\_  
 ~ \_\_\_\_\_  
 ~ \_\_\_\_\_  
 ~ \_\_\_\_\_  
 ~ \_\_\_\_\_  
 ~ \_\_\_\_\_



**MADE Market**

TIER 2



Next Step Design  
FOODSERVICE CONSULTANTS

913 West Street, Suite A  
Annapolis, MD 21401  
Ph: (410) 263-1200  
Fx: (410) 280-1340  
www.nextstepdesign.com

DATE: \_\_\_\_\_ SCALE: \_\_\_\_\_  
 ~ AS NOTED  
 PROJECT #: \_\_\_\_\_ DRAWN: \_\_\_\_\_  
 D-9175 JRLS

FOODSERVICE TIER 2  
EQUIPMENT FLOOR PLAN

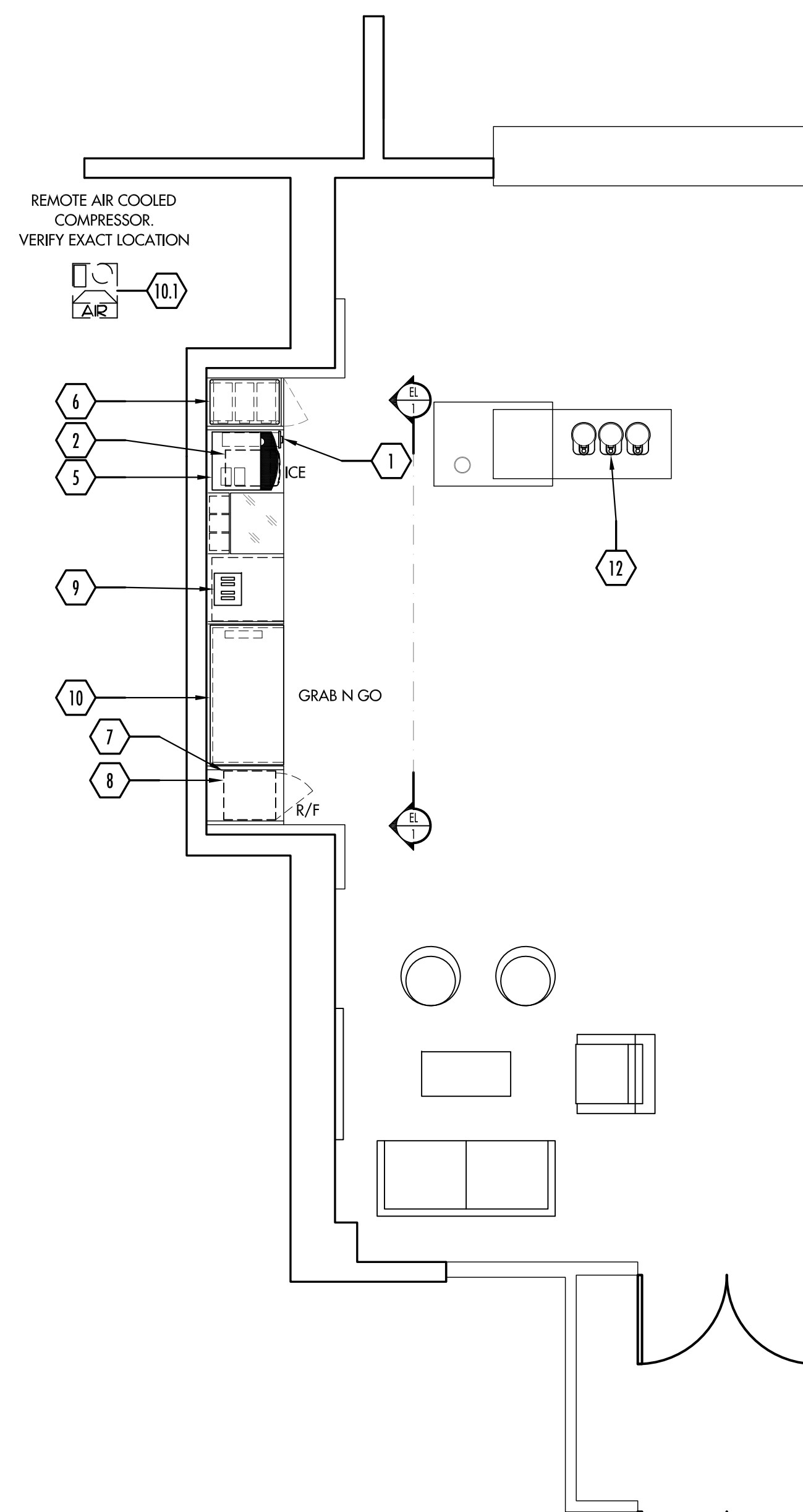
SHEET #:  
**FS-T2-1SO**

# EQUIPMENT SCHEDULE

PR	ITEM	QTY	SOURCE	DESCRIPTION
	1	4	SAN JAMAR	DISPOSABLE CUP DISPENSER
	2	1	FOLLETT	ICE MACHINE & DISPENSER, NUGGET STYLE
	3			SPARE NUMBER
	4			SPARE NUMBER
	5	1	CONCORDIA COFFEE	ESPRESSO CAPPUCCINO MACHINE
	6	1	CONCORDIA COFFEE	SYRUP BAG-N-BOX
	7	1	SUMMIT COMMERCIAL	REFRIGERATOR, MERCHANDISER
	8	1	SUMMIT COMMERCIAL	FREEZER, UNDERCOUNTER, REACH-IN
	9	1	STAR MFG.	POP-UP TOASTER
	10	1	RPI INDUSTRIES	OPEN MERCHANDISER
	10.1	1	COPELAND	CONDENSING UNIT
	11			SPARE NUMBER
	12	3	FETCO	COFFEE DISPENSER

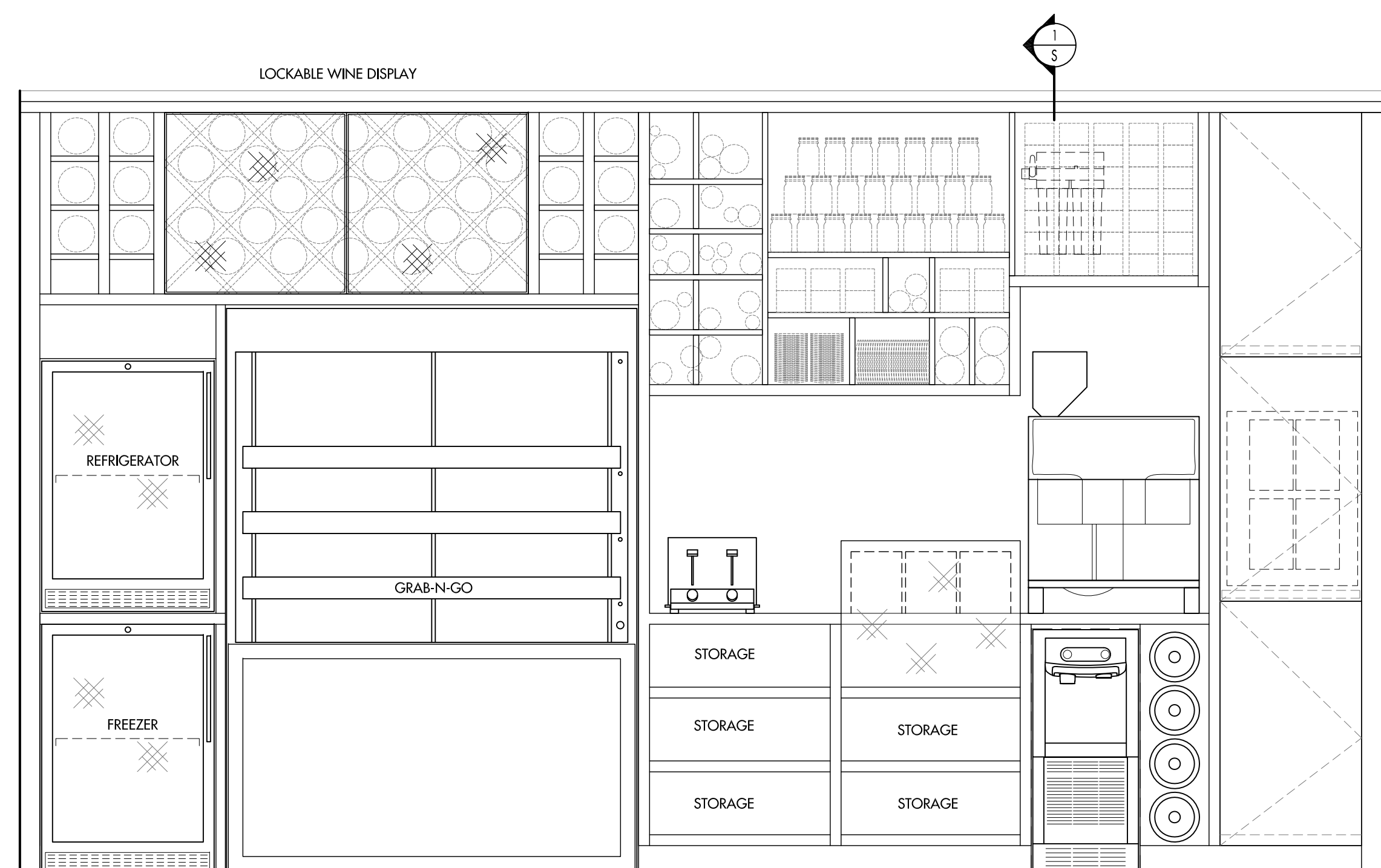
\*\*\*PROCUREMENT LEGEND\*\*\*

CODE	DESCRIPTION
(E)	EXISTING EQUIPMENT AS SHOWN.
(E/M)	EQUIPMENT TO BE MODIFIED BY KEC.
(E/M/R)	EXISTING EQUIPMENT, MODIFIED BY KEC/RELOCATED.
(E/R)	EXISTING EQUIPMENT TO BE RELOCATED.
(E/S/R)	EXISTING EQUIPMENT IN STORAGE (REINSTALL).
(FUT)	EQUIPMENT TO BE INSTALLED AT A FUTURE DATE.
(GC)	EQUIPMENT PROVIDED BY GENERAL CONTRACTOR.
(NIKEC)	NOT IN KITCHEN EQUIPMENT CONTRACT.
(OTHER)	EQUIPMENT PROVIDED BY OTHERS.
(OWN)	EQUIPMENT PROVIDED BY OWNER.
(SMWRS)	SEPARATE SMALL WARES BID.
(VEND)	EQUIPMENT PROVIDED BY VENDOR/SUPPLIER.

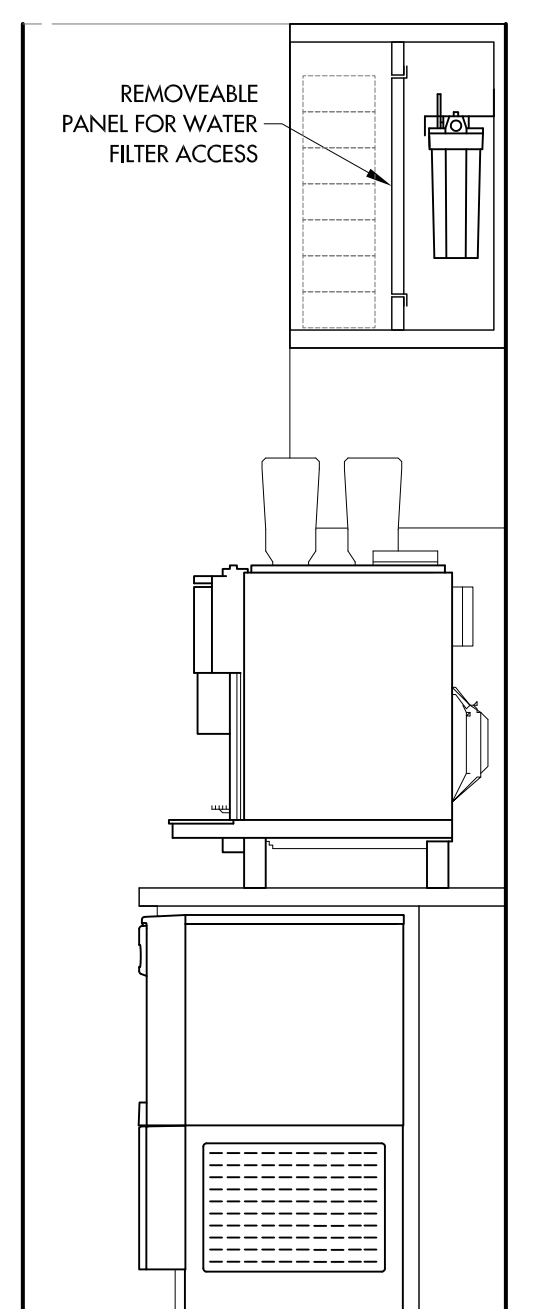


## MARKET TIER 2 EQUIPMENT FLOOR PLAN

SCALE 1/4" = 1'-0"



ELEVATION 1  
SCALE: 3/4"=1'-0"



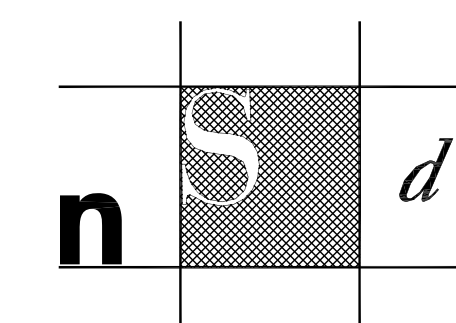
SECTION 2  
SCALE: 3/4"=1'-0"

**COPYRIGHT**  
UNAUTHORIZED USE OF THE FOODSERVICE DESIGNS, DETAILS, AutoCAD® BLOCKS, AND SPECIFICATIONS CONTAINED IN THESE DOCUMENTS IS STRICTLY PROHIBITED. NSD, INC. MAINTAINS OWNERSHIP OF SAME. THIS PROHIBITION EXTENDS FROM PRINTED MATERIAL TO ANY ELECTRONIC VERSION OF THE SAME. NO USE, OTHER THAN THAT FOR WHICH IT IS INTENDED, IS STRICTLY PROHIBITED WITHOUT WRITTEN PERMISSION FROM NEXT STEP DESIGN, INC. ALL RIGHTS RESERVED.



MADE Market

TIER 2



Next Step Design  
FOODSERVICE CONSULTANTS

913 West Street, Suite A  
Annapolis, MD 21401

Ph: (410) 263-1200  
Fx: (410) 280-1340  
www.nextstepdesign.com

DATE: ~  
SCALE: AS NOTED

PROJECT #: D-9175  
DRAWN: JRLS

FOODSERVICE TIER 2  
EQUIPMENT FLOOR PLAN

SHEET #:

FS-T2-1S